

AUTUMN BULL SALE
54 **CHAROLAIS**
ANGUS &
STABILIZER®

BULL PREVIEW • **BULL SALE**
1ST MARCH 2017 • **2ND MARCH 2017**

ON PROPERTY - YEA VICTORIA
SALE STARTS @ 1PM



L410 - LOT 8



L361 - LOT 4



M9 - LOT 47



M8 - LOT 42

CHAROLAIS SIREs



LT VENTURE 3198 (P)

THIS AUTUMN SALE SEES SOME OF THE FIRST LT VENTURE SONS TO SELL IN AUSTRALIA. WE HAVE FOUND VENTURE TO HAVE GREAT FEET AND STRUCTURE AND IS VERY DOCILE WITH A HIGH MUSCLE PATTERN.

AN INTERESTING OUTCROSS PEDIGREE FROM THE RENOWNED LT HERD, SOLD FOR \$50,000 USD IN 2014.

ASHWOOD PARK EXECUTIVE J83E (P)

EXECUTIVE J83 IS A FULL BROTHER TO H77, WITH THE SAME ROYAL PEDIGREE. HE IS A MASSIVE, BUT EASY DOING AND FREE MOVING INDIVIDUAL. HIS PROGENY EXHIBIT HIS MANY BEAUTIFUL TRAITS. EXECUTIVE HAS WORKED WELL OVER OUR DOC SILVER AND EASY GAIN FEMALES.



PARINGA HARVEY (AI) (ET) (P)

THE HARVEY SONS ARE A REAL HIGHLIGHT IN THIS SALE. CHECK OUT L410, AN AMAZING INDIVIDUAL WHO REFLECTS THE TRUE POTENTIAL OF HARVEY. HARVEY IS, IN MY OPINION, ANOTHER BREED CHANGER LIKE PARINGA D213 WAS MANY YEARS AGO. WE HAVE WITNESSED AN INCREDIBLY EARLY GROWTH PATTERN IN HARVEY PROGENY.

PARINGA HARVEY IS CURRENTLY RANKED #3 BULL/SIRES ON CHAROLAIS DATABASE FOR DOMESTIC INDEX (\$).

BRANCHVIEW HOWLER (P)

BRED BY THE POSTLE FAMILY IN QUEENSLAND, WE HAVE ENJOYED BREEDING WITH HOWLER FOR HIS FERTILITY, STRUCTURAL SOUNDNESS, ABILITY TO WORK HARD AND EASY CARE CHAROLAIS HE PRODUCES. WE HAVE HAD GREAT SUCCESS WITH THE BRANCHVIEW CATTLE, THE PURCHASE OF HOWLER AS STUD SIRE GAVE US THE OPPORTUNITY TO SECURE SOME DIFFERENT POLLED LINEAGE, INCLUDING THE MOONGOOL YELLOWSTONE IN HOWLER'S PEDIGREE.

THE PROGENY BY HOWLER HAVE TAKEN OUR CHAROLAIS TO ANOTHER LEVEL, AND GIVEN CUSTOMERS A NEW ANGLE. CHECK OUT SALE BULL L380E AND YOU WILL SEE WHAT WE ARE TALKING ABOUT.



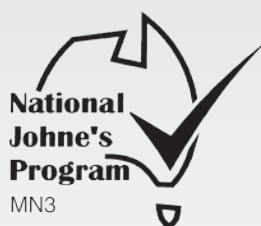
PARINGA LIVESTOCK AUTUMN BULL SALE

Thursday 2nd March 2017 at 1pm
ON PROPERTY "MISS YOUNG'S" 96 CREEDS RD. YEA VICTORIA

54 LOTS SELLING

40 x Registered Charolais
8 x Black Angus
6 x Black Stabilizer®

Helmsman Auction to be conducted by Michael Glasser, GTSM.



Michael Glasser 0403 526 702
Maz Glasser 0418 122 799
marion@gtsm.net.au

**5% REBATE TO ALL AGENTS WHO ATTEND THE SALE AND PURCHASE
WITH/ON BEHALF OF CLIENTS & SETTLE WITHIN 7 DAYS**

Disclaimer: Every care has been taken in compiling this catalogue to ensure accuracy of information supplied, but no responsibility is accepted for any errors which may have occurred.

Paringa Livestock Genetics Pty Ltd ABN 29 156 318 188
Contact: Tom and Olivia Lawson
Office: (03) 5797 3003 Tom: 0434 146 795
Email: info@paringalivestock.com.au Website: www.paringalivestock.com.au



Welcome...



Welcome to our 13th Annual Autumn Bull Sale. The focus at Paringa for 15 years now has been to advance our breeding program to achieve our genetic goals, and more predictably, and so here we are. It is with great pleasure that we present this Charolais feature sale, with 40 outstanding polled Charolais bulls with balance and style.

Along with the Charolais bulls, we present a select group of yearling Black Angus and Stabilizer® sires that are top of the drop. We know there are clients on the hunt for predictable heifer genetics this autumn, so we are offering plenty of options here.

These are good times to be in the cattle business. It is not often that the stars align with both good seasons and record prices; we hope it continues. Given the current beef climate, now is the ideal time to clean out the old bulls, cash in, and upgrade with modern genetics, putting together the best bull team to give the herd a boost of fresh, profitable and predictable genetics.

For evidence based information backing our bulls data, check out the recently published results from the BIN Charolais Cross Breeding Terminal Progeny Test – see page 8 of this catalogue for details. Because we are passionate about staying at the top of our game in terms of comparison with the top bulls within breeds, Paringa Angus genetics have participated in the Angus Benchmarking program over the past few years, also performing at the top end.

Studying the pedigrees of these bulls closely; you will notice the stacked generations of proven genetics, across all breeds. In the CHAROLAIS we are particularly excited about the Paringa Harvey H338 sons, and first LT Venture bulls. A good line of free moving, larger frame Executive bulls add to the mix. Branchview Howler son L380E is a homozygous polled highlight, as is the Ascot Ledger son with L361E already making some waves.

VPI Free Lunch is well represented, both as an AI reference sire and throughout the female side of pedigrees, as he's continued to work well in our herd. Check out L339E, a unique Stagecoach ET calf that has been used heavily; don't overlook this performance sire.

In the ANGUS section we introduce the highlight of the group, Paringa Massive M9 – a must see revolutionary stud sire. We have invited Bella Spur Angus to join us as guest vendors for the Autumn 2017 Sale, adding some exceptional bulls to our line-up. M1 is a particular highlight.

The young futuristic STABILIZER® sons are worthy of inspection, of special interest are the Barossa sons. Again for this sale, our Stabilizer® bulls are measured

through Australia's first Across Breed EBVs, and ranked for \$Profit. The whole Paringa herd is measured within a database of over 750,000 animals worldwide; see more information in the catalogue on how \$Profit works.

Please note all bulls are vet checked, vaccinated, scanned and independently assessed. We welcome your enquiry and inspection of the bulls prior to sale day.

You are invited to attend the BULL PREVIEW day on Wednesday 1st March from 10am to 3pm, and of course BULL SALE DAY on Thursday 2nd March from 10am. We really enjoy discussing your bull requirements with you, and making certain the bulls you select are the right match for your herd. Happy to answer your questions at any time about anything, if you can't attend the on farm days, please send us an email or call.

Thanks to our dedicated little crew at Paringa, who put up with my randomness daily and pull everything together. In particular Grant, Carolyn, Lynton, and family help from Liv, Oscar, Monty and Don.

Appreciate support from the great livestock agents who support us by attending our seasonal events and sales. And of course last, but definitely not least, our valued customers who buy Paringa genetics. Our goal in life is to offer the best affordable predictable genetics to you, our dedicated Australian beef producers.

Hope to catch you on the 1st March BULL PREVIEW DAY, or 2nd March BULL SALE DAY on property at Murrindindi/Yea. Lunch and refreshments will be available on both days.

Note for your Diary, the Paringa Spring Bull Sale Dates on the back cover, Central Victoria and Western Vic breeders note our inaugural Bull Selection Day 19th October 2017, on property Clarkes Hill.

Best Regards,
Tom Lawson
Co-Principal, Paringa Livestock Genetics.



Sale Information

SALE DATE AND PRIOR INSPECTION

Selling will commence at 1pm on Thursday 2nd March, 2017. Bull Sale Preview 1st March, 2017 - 10am - 3pm.

Bulls may be inspected from 9am on the morning of the sale, or at another time by arrangement with the agents or vendors.

SELLING SYSTEM

Sale of animals will be conducted under Helmsman auction terms and conditions. Please register with the selling agents to obtain a buyers number if you are considering making a purchase. Successful purchasers are requested to give written advice to the selling agents regarding transport arrangements at the conclusion of the sale.

REBATE

A 5% rebate to all outside agents who attend the sale with buyers or register introduction in writing 24 hours PRIOR to the sale. See page 38 of this catalogue for more details.

PHONE BIDDING - Now Available

Please contact selling agents or vendors to make arrangements prior to sale day.

GST

All animals are sold exclusive of GST.

INSURANCE

All due care is taken in the delivery of the animals purchased however buyers are responsible for the insurance of animals against injury or death from the fall of the hammer.

Insurance is available on the day or arrangements can be made prior to the sale.

DELIVERY

Deliveries can be organized by the vendor or the purchaser but please advise the selling agents of your requirements on sale day on buyer sheet including full contact details. Delivery is at the cost of the purchaser.

Please note: Bulls are available for transport at the conclusion of the sale. No transport is permitted during the auction.

BULL GUARANTEE

All breeding cattle bred by Paringa are fertile and structurally sound to the best of our knowledge.

If an issue arises with a bull within 12 months of purchase Paringa are willing to discuss options for a refund or replacement on a case by case basis. This is not an insurance policy - we recommend each purchaser takes out their own bull insurance and to avoid single sire mating their bull. To be eligible for guarantee the purchaser must lodge an application in writing within 12 months of purchase, provide a full veterinary report, photos and in some cases an inspection by the vendor.

This guarantee is in addition to normal terms and conditions governing auction sales and, as such the vendor's decision

will be final. Paringa Livestock Genetics Pty Ltd reserves the right to refuse a guarantee in some cases. Also please be aware Paringa is not liable for genetic defects, either current or future.

BREED SOCIETY TRANSFERS

Ownership transfer of the animals will be organized by the vendors provided accurate transferee details are supplied by the purchaser at time of buyer registration. There is no obligation for commercial buyers to transfer animals.

HEALTH & PHYSICAL EXAMINATION

All animals have had the following health treatments:

- Bulls have been ear notched and are tested PI free
- Bull vaccinations up to date including Pestigard, Vibrio Vaccination & 7 in 1 (Annual shots due September)
- Drenched with Eclipse
- Access to mineral licks

Please note: Foot trimming has not been performed on any animal.

INDEPENDENTLY ASSESSED

On the 9th February sale bulls were independently structurally assessed and measured for scrotal and temperament by Jim Green. Sale bulls have passed strict criteria on temperament, structure and weight for age, with scrotal palpations. Raw weights and scrotals available on sale day.

JOHNES STATUS

Paringa Livestock is accredited MN3 status and animals are eligible to go to all States and Territories.

PLEASE NOTE: VISITORS ENTER THE CATTLE PENS AT THEIR OWN RISK

CHILDREN MUST NOT ENTER THE PENS & YARDS AT ANY TIME



CHAROLAIS Terminal Cross Breeding Project

Beef Information Nucleus (BIN)

This progeny test is designed to:

- Demonstrate and establish the value of crossbreeding to commercial producers by using high performance terminal sires (Charolais, Limousin), in commercial British bred (Angus) females in Southern Australia.
- Demonstrate and establish the value of crossbreeding to commercial beef producers by using high performance terminal sires (Charolais, Limousin), in commercial Brahman type females in Northern Australia.
- Through the use of Limousin sires in the test, contribute information to AGBU on the formulation of multi-breed EBV's, EBVM.
- Collect information on the calving effect, weight performance, feedlot performance, carcase suitability and carcase makeup of all Charolais cross progeny generated by the test.
- Gather information as determined by AGBU to add to genetic information on the Charolais breed.
- Submit raw data to Charolais Breedplan enabling the development of highly accurate carcase breeding values.
- Investigate the role of scanning and other live measurements in identifying superior carcase sires
- Use the test outcomes generated to demonstrate the benefits of well structured breeding programs
- Provide a beef industry extension, learning and training programme focused on beef production, meat quality and meat safety issues.
- Progeny test young, performance recorded Charolais bulls for carcase and reproductive traits.
- Create the opportunity to export Australian bred and evaluated Charolais genetic s to seed stock and commercial herds internationally.

January 2017 Charolais Magazine

In Year 2 this cohort were raised at Ashvale Station in Queensland, with Warenden bull as link sire to CRC. Several sires were used to link year 1 to year 2 cohorts. There were 15 Charolais sires and 485 progeny from this cohort. The progeny were grain finished at 2 Queensland feedlots for 100 days, then slaughtered at 2 locations with link animals transported to both locations to accommodate the feedlot and abattoir effects.

Full results published from the entire BIN Project are available from Charolais Society (or Paringa Office) if interested.

Interpreting the Data

For selection purposes it is strongly advised that the BREEDPLAN EBVs and selection indexes be used primarily. They are the highest accuracy information to use in selection as they take into account all available industry data including the data generated from the Charolais Progeny Test (BIN) Project. They also account for information from all known relatives and genetic correlations between traits as well as being able to be compared across all cohorts and the Australian Charolais population. A full description of the BREEDPLAN traits can be found on the BREEDPLAN website.

The data from the BIN Project includes progeny average values and rankings for a range of traits recorded within the BIN Project. This listing provides an indication on how the sires performed within the Charolais Progeny Test (BIN) Project. The values listed can only be validly used to compare sires within each cohort of the Charolais BIN Project.

Cohort Number, Trait and unit of measurement

Cohort average = The average value for that trait for all animals in that cohort. This allows you to compare individual sires to the cohort average for each trait.

Cohort 1: Trait: Birthweight (kg) (Ave 39.69kg)

Sire Name	# Prog	Prog Ave	Rank
PARINGA RIO BRAVO D213E (AI) (P)	70	37.39	1
PARINGA GRID MAKER D190 (AI) (ET) (P)	24	38.10	2
M6 GRID MAKER 104 PET (P)	22	38.93	3
ASHWOOD PARK ARISTOCRAT (AI) (ET)	35	39.24	4
PARINGA WESTERN SPUR D196 (AI) (ET) (P)	38	39.47	5
LT EASY BLEND 5125 PLD (P)	39	40.44	6
SILVERSTREAM COLORADO C26	68	40.82	7
PARINGA PINAY D194 (AI) (ET)	10	41.06	8
LT THUNDERING WIND 5200P (P)	20	42.16	9
ELGIN COLUMBO	11	46.10	10

Prog = Number of progeny the sire has recorded for the specified trait. This excludes any progeny in single animal contemporary groups.

Progeny Average = The average performance of this sire's progeny for the specified trait in the Charolais BIN Project. The average is calculated using adjusted data (i.e. the standard BREEDPLAN adjustments for the age of the progeny and age of the dams). It is calculated using a least squares means (LSM) model which takes in herd and contemporary group.

Rank = The ranking position of the sire within the specified cohort. The ranking order will depend on the trait. E.g. 200 Day weight ranked in descending order, while birth weight is ranked in ascending order.

Project Summary

The project was completed over 3 joining years commencing in 2010. The progeny from the first joining were slaughtered in January and February of 2012. The calves from second year were slaughtered in September 2013, and third cohort followed suit in 2014.

In Year 1 the Charolais, Limousin and a Shorthorn sire were joined to 500 Angus cows on 5 farms in Victoria. Shorthorn sire was used as a link to CRC data. There were 407 progeny from this cohort. 50% of steers and all heifers were pasture finished and slaughtered separately. The remaining 50% of the steers were purchased and sent to Charlton feedlot for 100 day grain finishing then slaughtered through JBS.

Charolais Terminal Cross Breeding Project

Beef Information Nucleus (BIN)

Cohort 1 Sires.

Cohort 1: Sires

Sire Name	Sire ID	
ASHWOOD PARK ARISTOCRAT (AI) (ET)	HASA12E	Included
ELGIN COLUMBO	IAEC535F	Included
LT EASY BLEND 5125 PLD (P)	OAU5113E	Included
LT THUNDERING WIND 5200P (P)	OAU5168E	Included
M6 GRID MAKER 104 PET (P)	OAUW3377E	Included
SILVERSTREAM COLORADO C26	ONZC26E	Included
PARINGA GRID MAKER D190 (AI) (ET) (P)	TOLD190E	Included
PARINGA PINAY D194 (AI) (ET)	TOLD194E	Included
PARINGA WESTERN SPUR D196 (AI) (ET) (P)	TOLD196E	Included
PARINGA RIO BRAVO D213E (AI) (P)	TOLD213E	Included

Cohort 1: Traits with Least Square Means (LSM) calculated:

Birth Weight, Gestation Length, 200 Day Weight, 400 Day Weight, Scan EMA, Scan Rib, Scan Rump, Scan IMF, Carcase Weight, Carcase EMA, Carcase Rib, Carcase Rump, Carcase IMF, Carcase Marble Score (RAW PHENOTYPES).

Cohort 1: Trait: 200 Day Weight (kg) (Ave 248.66 kg)

Sire Name	# Prog	Prog Ave	Rank
LT THUNDERING WIND 5200P (P)	19	260.86	1
PARINGA WESTERN SPUR D196 (AI) (ET) (P)	33	254.80	2
LT EASY BLEND 5125 PLD (P)	36	254.56	3
SILVERSTREAM COLORADO C26	62	252.31	4
ELGIN COLUMBO	10	251.63	5
ASHWOOD PARK ARISTOCRAT (AI) (ET)	33	250.98	6
PARINGA PINAY D194 (AI) (ET)	9	247.06	7
PARINGA GRID MAKER D190 (AI) (ET) (P)	22	242.10	8
PARINGA RIO BRAVO D213E (AI) (P)	61	238.96	9
M6 GRID MAKER 104 PET (P)	20	237.14	10

Cohort 1: Trait: 400 Day Weight (kg) (Ave 369.04 kg)

Sire Name	# Prog	Prog Ave	Rank
PARINGA PINAY D194 (AI) (ET)	8	378.97	1
LT EASY BLEND 5125 PLD (P)	36	375.41	2
LT THUNDERING WIND 5200P (P)	18	374.98	3
SILVERSTREAM COLORADO C26	59	373.98	4
PARINGA GRID MAKER D190 (AI) (ET) (P)	20	373.08	5
PARINGA WESTERN SPUR D196 (AI) (ET) (P)	28	372.11	6
M6 GRID MAKER 104 PET (P)	16	368.84	7
ASHWOOD PARK ARISTOCRAT (AI) (ET)	33	361.62	8
PARINGA RIO BRAVO D213E (AI) (P)	59	360.28	9
ELGIN COLUMBO	10	358.13	10

Cohort 1: Trait: Birthweight (kg) (Ave 39.69 kg)

Sire Name	# Prog	Prog Ave	Rank
PARINGA RIO BRAVO D213E (AI) (P)	70	37.39	1
PARINGA GRID MAKER D190 (AI) (ET) (P)	24	38.10	2
M6 GRID MAKER 104 PET (P)	22	38.93	3
ASHWOOD PARK ARISTOCRAT (AI) (ET)	35	39.24	4
PARINGA WESTERN SPUR D196 (AI) (ET) (P)	38	39.47	5
LT EASY BLEND 5125 PLD (P)	39	40.44	6
SILVERSTREAM COLORADO C26	68	40.82	7
PARINGA PINAY D194 (AI) (ET)	10	41.06	8
LT THUNDERING WIND 5200P (P)	20	42.16	9
ELGIN COLUMBO	11	46.10	10

Cohort 1: Trait: Scan EMA (cm²) (Ave 68.28 cm²)

Sire Name	# Prog	Prog Ave	Rank
M6 GRID MAKER 104 PET (P)	10	68.90	1
ASHWOOD PARK ARISTOCRAT (AI) (ET)	21	68.83	2
PARINGA RIO BRAVO D213E (AI) (P)	36	68.82	3
PARINGA WESTERN SPUR D196 (AI) (ET) (P)	10	68.43	4
LT EASY BLEND 5125 PLD (P)	19	68.33	5
ELGIN COLUMBO	5	67.81	6
SILVERSTREAM COLORADO C26	24	67.60	7
PARINGA GRID MAKER D190 (AI) (ET) (P)	5	67.55	8
LT THUNDERING WIND 5200P (P)	7	67.24	9
PARINGA PINAY D194 (AI) (ET)	4	65.65	10

Cohort 1: Trait: Gestation Length (days) (Ave 282.32 days)

Sire Name	# Prog	Prog Ave	Rank
PARINGA GRID MAKER D190 (AI) (ET) (P)	24	277.78	1
M6 GRID MAKER 104 PET (P)	22	279.67	2
PARINGA WESTERN SPUR D196 (AI) (ET) (P)	37	282.04	3
PARINGA RIO BRAVO D213E (AI) (P)	65	282.12	4
SILVERSTREAM COLORADO C26	67	282.82	5
ASHWOOD PARK ARISTOCRAT (AI) (ET)	36	283.18	6
LT EASY BLEND 5125 PLD (P)	39	283.23	7
LT THUNDERING WIND 5200P (P)	18	283.37	8
PARINGA PINAY D194 (AI) (ET)	8	283.41	9
ELGIN COLUMBO	10	288.67	10

Cohort 1: Trait: Scan Rib (mm) (Ave 5.27 mm)

Sire Name	# Prog	Prog Ave	Rank
PARINGA RIO BRAVO D213E (AI) (P)	36	6.09	1
PARINGA WESTERN SPUR D196 (AI) (ET) (P)	10	5.53	2
LT EASY BLEND 5125 PLD (P)	19	5.39	3
LT THUNDERING WIND 5200P (P)	7	5.26	4
SILVERSTREAM COLORADO C26	24	5.23	5
ASHWOOD PARK ARISTOCRAT (AI) (ET)	21	4.65	6
PARINGA GRID MAKER D190 (AI) (ET) (P)	5	4.51	7
ELGIN COLUMBO	5	4.42	8
PARINGA PINAY D194 (AI) (ET)	4	4.40	9
M6 GRID MAKER 104 PET (P)	10	4.36	10

Cohort 1: Trait: Scan Rump (mm) (Ave 6.69 mm)			
Sire Name	# Prog	Prog Ave	Rank
PARINGA RIO BRAVO D213E (AI) (P)	36	7.80	1
PARINGA WESTERN SPUR D196 (AI) (ET) (P)	10	6.97	2
LT THUNDERING WIND 5200P (P)	7	6.88	3
LT EASY BLEND 5125 PLD (P)	19	6.85	4
SILVERSTREAM COLORADO C26	24	6.65	5
M6 GRID MAKER 104 PET (P)	10	5.90	6
PARINGA GRID MAKER D190 (AI) (ET) (P)	5	5.87	7
PARINGA PINAY D194 (AI) (ET)	4	5.83	8
ASHWOOD PARK ARISTOCRAT (AI) (ET)	21	5.77	9
ELGIN COLUMBO	5	4.37	10

Cohort 1: Trait: Carcase Rib (mm) (Ave 10.49 mm)			
Sire Name	# Prog	Prog Ave	Rank
PARINGA PINAY D194 (AI) (ET)	4	11.28	1
LT EASY BLEND 5125 PLD (P)	23	11.24	2
ELGIN COLUMBO	5	11.20	3
PARINGA RIO BRAVO D213E (AI) (P)	38	11.00	4
SILVERSTREAM COLORADO C26	44	10.49	5
LT THUNDERING WIND 5200P (P)	15	10.22	6
PARINGA WESTERN SPUR D196 (AI) (ET) (P)	21	10.07	7
PARINGA GRID MAKER D190 (AI) (ET) (P)	16	10.04	8
ASHWOOD PARK ARISTOCRAT (AI) (ET)	20	9.90	9
M6 GRID MAKER 104 PET (P)	11	9.46	10

Cohort 1: Trait: Scan IMF (%) (Ave 5.71%)			
Sire Name	# Prog	Prog Ave	Rank
PARINGA RIO BRAVO D213E (AI) (P)	36	6.16	1
PARINGA WESTERN SPUR D196 (AI) (ET) (P)	10	5.74	2
LT EASY BLEND 5125 PLD (P)	19	5.74	3
M6 GRID MAKER 104 PET (P)	10	5.62	4
PARINGA GRID MAKER D190 (AI) (ET) (P)	5	5.60	5
SILVERSTREAM COLORADO C26	24	5.59	6
LT THUNDERING WIND 5200P (P)	7	5.56	7
ASHWOOD PARK ARISTOCRAT (AI) (ET)	21	5.38	8
PARINGA PINAY D194 (AI) (ET)	4	5.34	9
ELGIN COLUMBO	5	4.95	10

Cohort 1: Trait: Carcase Rump (mm) (Ave 9.14 mm)			
Sire Name	# Prog	Prog Ave	Rank
PARINGA RIO BRAVO D213E (AI) (P)	56	12.03	1
PARINGA WESTERN SPUR D196 (AI) (ET) (P)	26	9.69	2
LT EASY BLEND 5125 PLD (P)	33	9.42	3
SILVERSTREAM COLORADO C26	55	8.85	4
LT THUNDERING WIND 5200P (P)	18	8.67	5
ASHWOOD PARK ARISTOCRAT (AI) (ET)	32	8.27	6
PARINGA GRID MAKER D190 (AI) (ET) (P)	19	7.41	7
M6 GRID MAKER 104 PET (P)	15	7.08	8
PARINGA PINAY D194 (AI) (ET)	8	6.74	9
ELGIN COLUMBO	10	4.18	10

Cohort 1: Trait: Carcase Weight (kg) (Ave 319.68 kg)			
Sire Name	# Prog	Prog Ave	Rank
M6 GRID MAKER 104 PET (P)	15	326.25	1
PARINGA GRID MAKER D190 (AI) (ET) (P)	19	324.12	2
LT EASY BLEND 5125 PLD (P)	33	324.03	3
SILVERSTREAM COLORADO C26	56	323.70	4
ELGIN COLUMBO	10	323.50	5
LT THUNDERING WIND 5200P (P)	18	322.79	6
PARINGA WESTERN SPUR D196 (AI) (ET) (P)	26	322.75	7
PARINGA PINAY D194 (AI) (ET)	8	321.47	8
PARINGA RIO BRAVO D213E (AI) (P)	58	312.37	9
ASHWOOD PARK ARISTOCRAT (AI) (ET)	32	309.79	10

Cohort 1: Trait: Carcase IMF (%) (Ave 5.07%)			
Sire Name	# Prog	Prog Ave	Rank
PARINGA RIO BRAVO D213E (AI) (P)	42	5.78	1
ASHWOOD PARK ARISTOCRAT (AI) (ET)	20	5.47	2
LT EASY BLEND 5125 PLD (P)	23	5.36	3
LT THUNDERING WIND 5200P (P)	15	5.13	4
PARINGA PINAY D194 (AI) (ET)	4	4.86	5
SILVERSTREAM COLORADO C26	44	4.84	6
M6 GRID MAKER 104 PET (P)	11	4.73	7
PARINGA GRID MAKER D190 (AI) (ET) (P)	16	4.50	8
PARINGA WESTERN SPUR D196 (AI) (ET) (P)	21	4.41	9
ELGIN COLUMBO	5	3.65	10

Cohort 1: Trait: Carcase EMA (cm²) (Ave 69.72 cm²)			
Sire Name	# Prog	Prog Ave	Rank
ASHWOOD PARK ARISTOCRAT (AI) (ET)	19	72.19	1
PARINGA PINAY D194 (AI) (ET)	4	71.03	2
ELGIN COLUMBO	5	71.02	3
PARINGA GRID MAKER D190 (AI) (ET) (P)	16	70.82	4
PARINGA RIO BRAVO D213E (AI) (P)	42	70.75	5
M6 GRID MAKER 104 PET (P)	11	70.25	6
LT THUNDERING WIND 5200P (P)	15	69.71	7
PARINGA WESTERN SPUR D196 (AI) (ET) (P)	21	69.05	8
LT EASY BLEND 5125 PLD (P)	23	68.38	9
SILVERSTREAM COLORADO C26	44	67.88	10

Cohort 1: Trait: Carcase Marble Score * (Ave 321.68)			
Sire Name	# Prog	Prog Ave	Rank
PARINGA RIO BRAVO D213E (AI) (P)	42	348.48	1
LT EASY BLEND 5125 PLD (P)	23	337.33	2
PARINGA PINAY D194 (AI) (ET)	4	335.43	3
LT THUNDERING WIND 5200P (P)	15	334.77	4
ASHWOOD PARK ARISTOCRAT (AI) (ET)	20	325.18	5
M6 GRID MAKER 104 PET (P)	11	314.89	6
SILVERSTREAM COLORADO C26	44	314.18	7
PARINGA GRID MAKER D190 (AI) (ET) (P)	16	298.73	8
PARINGA WESTERN SPUR D196 (AI) (ET) (P)	21	292.28	9
ELGIN COLUMBO	5	238.18	10

***Caution: Raw unadjusted Phenotypes**

Charolais Terminal Cross Breeding Project

Beef Information Nucleus (BIN)

Cohort 2 Sires.

Cohort 2: Sires

Sire Name	Sire ID	
RIVERGLEN HIGH PERFORMANCE	JDSH374E	Included
BAROOLA D903D	NCFD903D	Included
BAROOLA D9D (P)	NCFD9D	Included
HCR SUCCESS	OAUB7002E	Included
PALGROVE DEXTER	PKD1134E	Included
RIVER RUN DYNAMITE	PLTD4E	Included
RANGAN PARK RIO BRAVO E18 (AI) (ET) (P)	RANE18E	Included
PARINGA MAX D101 (AI) (ET) (P/S)	TOLD101E	Included
PARINGA BLUEGRASS D121 (AI) (ET) (P)	TOLD121E	Included
PARINGA BLUEGRASS D123 (AI) (ET) (P)	TOLD123E	Included
PARINGA GRID MAKER D146 (AI) (ET) (P)	TOLD146E	Included
PARINGA PINAY D194 (AI) (ET)	TOLD194E	Included
PARINGA WESTERN SPUR D196 (AI) (ET) (P)	TOLD196E	Included
PARINGA RIO BRAVO D213E (AI) (P)	TOLD213E	Included
PARINGA RIO BRAVO D250 (AI)	TOLD250E	Included
WARREDEN NICK (AI)	WFMN54D	Included
RIVERGLEN P710E	JDSP710E	Excluded*

* Due to lack of progeny

Cohort 2: Traits with Least Square Means (LSM) calculated:

Birth Weight, Gestation Length, 200 Day Weight, 400 Day Weight, 600 Day Weight, Scan EMA, Scan Rib, Scan Rump, Scan IMF, Carcase Weight, Carcase EMA, Carcase Rib, Carcase Rump, Carcase IMF, Carcase Marble Score (RAW PHENOTYPES).

Cohort 2: Trait: Birthweight (kg) (Ave 29.27 kg)

Sire Name	# Prog	Prog Ave	Rank
WARREDEN NICK (AI)	6	24.80	1
PARINGA RIO BRAVO D213E (AI) (P)	12	25.49	2
HCR SUCCESS	9	27.31	3
PARINGA GRID MAKER D146 (AI) (ET) (P)	28	27.83	4
RANGAN PARK RIO BRAVO E18 (AI) (ET) (P)	48	27.87	5
PARINGA PINAY D194 (AI) (ET)	33	28.25	6
PARINGA BLUEGRASS D123 (AI) (ET) (P)	26	28.84	7
PARINGA RIO BRAVO D250 (AI)	24	28.98	8
RIVERGLEN HIGH PERFORMANCE	10	29.02	9
PALGROVE DEXTER	35	29.23	10
PARINGA MAX D101 (AI) (ET) (P/S)	33	29.34	11
PARINGA WESTERN SPUR D196 (AI) (ET) (P)	23	29.36	12
BAROOLA D903D	42	30.00	13
PARINGA BLUEGRASS D121 (AI) (ET) (P)	36	30.51	14
RIVER RUN DYNAMITE	23	31.21	15
BAROOLA D9D (P)	50	31.88	16

Cohort 2: Trait: Gest. Length (Days) (Ave 286.78 days)

Sire Name	# Prog	Prog Ave	Rank
PARINGA BLUEGRASS D123 (AI) (ET) (P)	3	281.29	1
WARREDEN NICK (AI)	6	282.91	2
PARINGA MAX D101 (AI) (ET) (P/S)	20	283.37	3
PARINGA RIO BRAVO D213E (AI) (P)	11	284.69	4
RANGAN PARK RIO BRAVO E18 (AI) (ET) (P)	43	284.97	5
RIVERGLEN HIGH PERFORMANCE	10	286.18	6
HCR SUCCESS	6	286.62	7
PALGROVE DEXTER	32	286.96	8
BAROOLA D903D	22	288.16	9
BAROOLA D9D (P)	29	288.46	10
PARINGA WESTERN SPUR D196 (AI) (ET) (P)	1	290.86	11
PARINGA RIO BRAVO D250 (AI)	2	292.50	12
PARINGA GRID MAKER D146 (AI) (ET) (P)	4	296.32	13
RIVER RUN DYNAMITE	3	296.86	14
PARINGA BLUEGRASS D121 (AI) (ET) (P)	1	297.86	15
PARINGA PINAY D194 (AI) (ET)	3	298.81	16

Cohort 2: Trait: 200 Day Weight (kg) (Ave 184.77 kg)

Sire Name	# Prog	Prog Ave	Rank
RIVER RUN DYNAMITE	23	194.56	1
PARINGA GRID MAKER D146 (AI) (ET) (P)	26	193.52	2
BAROOLA D9D (P)	48	191.94	3
PARINGA WESTERN SPUR D196 (AI) (ET) (P)	22	188.45	4
PARINGA PINAY D194 (AI) (ET)	32	186.98	5
PARINGA BLUEGRASS D121 (AI) (ET) (P)	36	185.35	6
PALGROVE DEXTER	35	184.94	7
BAROOLA D903D	43	183.83	8
PARINGA RIO BRAVO D250 (AI)	22	182.61	9
HCR SUCCESS	10	182.34	10
PARINGA MAX D101 (AI) (ET) (P/S)	29	180.12	11
RANGAN PARK RIO BRAVO E18 (AI) (ET) (P)	47	179.93	12
PARINGA BLUEGRASS D123 (AI) (ET) (P)	26	178.72	13
PARINGA RIO BRAVO D213E (AI) (P)	12	174.83	14
RIVERGLEN HIGH PERFORMANCE	10	173.64	15
WARREDEN NICK (AI)	6	166.28	16

Cohort 2: Trait: 400 Day Weight (kg) (Ave 264.86 kg)

Sire Name	# Prog	Prog Ave	Rank
RIVER RUN DYNAMITE	23	275.98	1
BAROOLA D9D (P)	47	275.19	2
PARINGA WESTERN SPUR D196 (AI) (ET) (P)	22	270.98	3
PARINGA PINAY D194 (AI) (ET)	32	269.34	4
PARINGA GRID MAKER D146 (AI) (ET) (P)	26	267.84	5
BAROOLA D903D	42	267.21	6
PARINGA BLUEGRASS D121 (AI) (ET) (P)	36	266.36	7
PALGROVE DEXTER	35	264.87	8
HCR SUCCESS	10	260.98	9
PARINGA MAX D101 (AI) (ET) (P/S)	29	259.75	10
RANGAN PARK RIO BRAVO E18 (AI) (ET) (P)	48	259.44	11
PARINGA RIO BRAVO D250 (AI)	22	257.93	12
PARINGA BLUEGRASS D123 (AI) (ET) (P)	26	256.76	13
RIVERGLEN HIGH PERFORMANCE	10	253.45	14
PARINGA RIO BRAVO D213E (AI) (P)	12	249.07	15
WARREDEN NICK (AI)	6	242.52	16

Cohort 2: Trait: 600 Day Weight (kg) (Ave 349.72 kg)

Sire Name	# Prog	Prog Ave	Rank
BAROOLA D9D (P)	47	359.16	1
BAROOLA D903D	42	359.12	2
PARINGA GRID MAKER D146 (AI)(ET)(P)	26	357.49	3
PALGROVE DEXTER	35	357.13	4
PARINGA PINAY D194 (AI) (ET)	32	354.47	5
PARINGA WESTERN SPUR D196 (AI)(ET)(P)	21	353.60	6
PARINGA BLUEGRASS D121 (AI) (ET) (P)	36	351.01	7
RIVER RUN DYNAMITE	23	350.84	8
PARINGA MAX D101 (AI) (ET) (P/S)	29	348.82	9
RANGAN PARK RIO BRAVO E18 (AI)(ET)(P)	48	343.12	10
HCR SUCCESS	10	337.68	11
RIVERGLEN HIGH PERFORMANCE	10	337.01	12
PARINGA RIO BRAVO D213E (AI) (P)	12	334.82	13
PARINGA RIO BRAVO D250 (AI)	21	334.81	14
PARINGA BLUEGRASS D123 (AI) (ET) (P)	25	333.94	15
WARREDEN NICK (AI)	6	328.13	16

Cohort 2: Trait: Scan EMA (cm²) (Ave 53.97 cm²)

Sire Name	# Prog	Prog Ave	Rank
PARINGA PINAY D194 (AI) (ET)	17	55.84	1
PALGROVE DEXTER	23	55.77	2
RANGAN PARK RIO BRAVO E18 (AI)(ET)(P)	25	55.18	3
PARINGA GRID MAKER D146 (AI)(ET)(P)	17	55.11	4
BAROOLA D903D	16	55.10	5
BAROOLA D9D (P)	25	54.82	6
PARINGA RIO BRAVO D250 (AI)	5	54.06	7
PARINGA RIO BRAVO D213E (AI) (P)	5	53.87	8
PARINGA MAX D101 (AI) (ET) (P/S)	11	53.39	9
PARINGA BLUEGRASS D123 (AI) (ET) (P)	13	51.99	10
RIVER RUN DYNAMITE	12	51.97	11
HCR SUCCESS	3	51.85	12
PARINGA WESTERN SPUR D196 (AI)(ET)(P)	10	51.85	13
PARINGA BLUEGRASS D121 (AI) (ET) (P)	13	50.77	14
RIVERGLEN HIGH PERFORMANCE	8	50.08	15
WARREDEN NICK (AI)	1	49.20	16

Cohort 2: Trait: Scan Rib (mm) (Ave 2.88 mm)

Sire Name	# Prog	Prog Ave	Rank
HCR SUCCESS	3	3.50	1
PARINGA RIO BRAVO D213E (AI) (P)	5	3.48	2
PARINGA WESTERN SPUR D196 (AI)(ET)(P)	10	3.37	3
BAROOLA D903D	16	3.22	4
PARINGA MAX D101 (AI) (ET) (P/S)	11	3.09	5
RANGAN PARK RIO BRAVO E18 (AI)(ET)(P)	25	3.03	6
PARINGA BLUEGRASS D121 (AI) (ET) (P)	13	2.99	7
PALGROVE DEXTER	23	2.83	8
PARINGA GRID MAKER D146 (AI)(ET)(P)	17	2.78	9
PARINGA PINAY D194 (AI) (ET)	17	2.77	10
BAROOLA D9D (P)	25	2.71	11
PARINGA BLUEGRASS D123 (AI) (ET) (P)	13	2.68	12
PARINGA RIO BRAVO D250 (AI)	5	2.64	13
WARREDEN NICK (AI)	1	2.59	14
RIVERGLEN HIGH PERFORMANCE	8	2.39	15
RIVER RUN DYNAMITE	12	2.35	16



Cohort 2: Trait: Scan Rump (mm) (Ave 3.57 mm)

Sire Name	# Prog	Prog Ave	Rank
HCR SUCCESS	3	4.49	1
PARINGA RIO BRAVO D213E (AI) (P)	5	4.32	2
PARINGA WESTERN SPUR D196 (AI)(ET)(P)	10	3.98	3
BAROOLA D903D	16	3.72	4
RANGAN PARK RIO BRAVO E18 (AI)(ET)(P)	25	3.71	5
PARINGA GRID MAKER D146 (AI)(ET)(P)	17	3.58	6
PARINGA PINAY D194 (AI) (ET)	17	3.57	7
PARINGA BLUEGRASS D123 (AI) (ET) (P)	13	3.56	8
PALGROVE DEXTER	23	3.55	9
PARINGA MAX D101 (AI) (ET) (P/S)	11	3.52	10
BAROOLA D9D (P)	25	3.42	11
PARINGA BLUEGRASS D121 (AI) (ET) (P)	13	3.38	12
RIVER RUN DYNAMITE	12	3.31	13
PARINGA RIO BRAVO D250 (AI)	5	3.30	14
RIVERGLEN HIGH PERFORMANCE	8	3.09	15
WARREDEN NICK (AI)	1	2.86	16

Cohort 2: Trait: Scan IMF (%) (Ave 4.13%)

Sire Name	# Prog	Prog Ave	Rank
PARINGA MAX D101 (AI) (ET) (P/S)	11	4.66	1
PARINGA RIO BRAVO D213E (AI) (P)	5	4.61	2
RANGAN PARK RIO BRAVO E18 (AI)(ET)(P)	25	4.40	3
HCR SUCCESS	3	4.30	4
PARINGA BLUEGRASS D121 (AI) (ET) (P)	13	4.24	5
PARINGA BLUEGRASS D123 (AI) (ET) (P)	13	4.19	6
PARINGA WESTERN SPUR D196 (AI)(ET)(P)	10	4.16	7
PARINGA RIO BRAVO D250 (AI)	5	4.43	8
PARINGA PINAY D194 (AI) (ET)	17	4.10	9
BAROOLA D9D (P)	25	4.07	10
RIVERGLEN HIGH PERFORMANCE	8	4.03	11
PALGROVE DEXTER	23	4.03	12
BAROOLA D903D	16	3.97	13
RIVER RUN DYNAMITE	12	3.83	14
PARINGA GRID MAKER D146 (AI)(ET)(P)	17	3.79	15
WARREDEN NICK (AI)	1	3.70	16

Cohort 2: Trait: Carcase Weight (kg) (Ave 241.60 kg)

Sire Name	# Prog	Prog Ave	Rank
PALGROVE DEXTER	35	252.31	1
BAROOLA D9D (P)	46	248.09	2
RANGAN PARK RIO BRAVO E18 (AI) (ET) (P)	44	242.95	3
PARINGA MAX D101 (AI) (ET) (P/S)	28	242.87	4
PARINGA BLUEGRASS D123 (AI) (ET) (P)	23	241.61	5
PARINGA PINAY D194 (AI) (ET)	32	241.49	6
RIVERGLEN HIGH PERFORMANCE	9	240.94	7
BAROOLA D903D	42	240.82	8
PARINGA WESTERN SPUR D196 (AI) (ET) (P)	19	240.57	9
HCR SUCCESS	8	239.22	10
PARINGA RIO BRAVO D250 (AI)	21	239.07	11
PARINGA BLUEGRASS D121 (AI) (ET) (P)	36	238.33	12
WARREDEN NICK (AI)	6	238.04	13
RIVER RUN DYNAMITE	21	237.70	14
PARINGA GRID MAKER D146 (AI) (ET) (P)	25	231.15	15
PARINGA RIO BRAVO D213E (AI) (P)	12	228.91	16

Cohort 2: Trait: Carcase EMA (cm²) (Ave 77.91 cm²)

Sire Name	# Prog	Prog Ave	Rank
PARINGA GRID MAKER D146 (AI) (ET) (P)	25	80.62	1
PARINGA BLUEGRASS D123 (AI) (ET) (P)	23	80.27	2
PARINGA WESTERN SPUR D196 (AI) (ET) (P)	19	79.58	3
RANGAN PARK RIO BRAVO E18 (AI) (ET) (P)	41	79.47	4
PARINGA PINAY D194 (AI) (ET)	32	79.41	5
BAROOLA D903D	42	79.26	6
WARREDEN NICK (AI)	6	79.04	7
PARINGA MAX D101 (AI) (ET) (P/S)	27	78.58	8
PARINGA RIO BRAVO D213E (AI) (P)	11	77.45	9
PARINGA RIO BRAVO D250 (AI)	21	76.71	10
PARINGA BLUEGRASS D121 (AI) (ET) (P)	35	76.59	11
BAROOLA D9D (P)	45	76.36	12
RIVER RUN DYNAMITE	21	75.49	13
RIVERGLEN HIGH PERFORMANCE	9	74.97	14
PALGROVE DEXTER	32	74.87	15
HCR SUCCESS	8	74.49	16

Cohort 2: Trait: Carcase Rump (mm) (Ave 9.00 mm)

Sire Name	# Prog	Prog Ave	Rank
RANGAN PARK RIO BRAVO E18 (AI) (ET) (P)	43	10.88	1
HCR SUCCESS	8	10.88	2
PARINGA RIO BRAVO D213E (AI) (P)	12	10.64	3
PARINGA WESTERN SPUR D196 (AI) (ET) (P)	19	10.44	4
RIVERGLEN HIGH PERFORMANCE	9	9.98	5
PARINGA BLUEGRASS D123 (AI) (ET) (P)	22	9.67	6
PARINGA RIO BRAVO D250 (AI)	21	9.64	7
PARINGA MAX D101 (AI) (ET) (P/S)	28	9.36	8
PARINGA BLUEGRASS D121 (AI) (ET) (P)	36	9.06	9
PALGROVE DEXTER	34	9.04	10
WARREDEN NICK (AI)	6	8.87	11
BAROOLA D903D	42	8.59	12
PARINGA PINAY D194 (AI) (ET)	32	8.53	13
PARINGA GRID MAKER D146 (AI) (ET) (P)	24	8.02	14
RIVER RUN DYNAMITE	21	7.02	15
BAROOLA D9D (P)	46	6.91	16

Cohort 2: Trait: Carcase IMF (%) (Ave 5.39%)

Sire Name	# Prog	Prog Ave	Rank
PARINGA BLUEGRASS D123 (AI) (ET) (P)	23	6.33	1
RIVER RUN DYNAMITE	21	6.13	2
PARINGA BLUEGRASS D121 (AI) (ET) (P)	36	6.02	3
RANGAN PARK RIO BRAVO E18 (AI) (ET) (P)	44	5.97	4
WARREDEN NICK (AI)	6	5.97	5
PARINGA RIO BRAVO D213E (AI) (P)	12	5.72	6
PARINGA RIO BRAVO D250 (AI)	21	5.62	7
PARINGA PINAY D194 (AI) (ET)	32	5.51	8
HCR SUCCESS	8	5.43	9
PARINGA MAX D101 (AI) (ET) (P/S)	28	5.26	10
PARINGA GRID MAKER D146 (AI) (ET) (P)	25	5.24	11
PARINGA WESTERN SPUR D196 (AI) (ET) (P)	19	5.04	12
BAROOLA D903D	42	4.97	13
RIVERGLEN HIGH PERFORMANCE	9	4.91	14
PALGROVE DEXTER	35	4.70	15
BAROOLA D9D (P)	46	4.47	16

Cohort 2: Trait: Carcase Marble Score* (Ave 342.55)

Sire Name	# Prog	Prog Ave	Rank
PARINGA BLUEGRASS D123 (AI) (ET) (P)	23	382.03	1
RIVER RUN DYNAMITE	21	372.14	2
RANGAN PARK RIO BRAVO E18 (AI) (ET) (P)	44	369.88	3
PARINGA BLUEGRASS D121 (AI) (ET) (P)	36	366.92	4
WARREDEN NICK (AI)	6	366.45	5
PARINGA RIO BRAVO D250 (AI)	21	353.19	6
PARINGA PINAY D194 (AI) (ET)	32	351.94	7
HCR SUCCESS	8	344.76	8
PARINGA MAX D101 (AI) (ET) (P/S)	28	340.58	9
PARINGA RIO BRAVO D213E (AI) (P)	12	335.13	10
PARINGA WESTERN SPUR D196 (AI) (ET) (P)	19	328.83	11
PALGROVE DEXTER	35	326.18	12
PARINGA GRID MAKER D146 (AI) (ET) (P)	25	321.81	13
RIVERGLEN HIGH PERFORMANCE	9	319.21	14
BAROOLA D903D	42	319.02	15
BAROOLA D9D (P)	46	307.75	16

*Caution: Raw unadjusted Phenotypes





CHAROLAIS


REFERENCE SIRES

VPI FREE LUNCH 708T (P)

Birth Date: 23/01/2007 Society Id: OAUC6773E Sex: M Poll/Horn: Polled

WCR PRIME CUT 764 PLD PMC223447 (P) JWK IMPRESSIVE D040
Sire: LT RIO BLANCO 1234 P (P) WCR MISS EASE 4314
 LT PRAIRIE MAID 4054 HCR SENATOR 9052
 LT PRAIRIE MAIDEN

WCR PRIME CUT 764 JWK IMPRESSIVE D040
Dam: VPI MISS DUCHESS 404 P WCR MISS EASE 4314
 VCR MISS DUCHESS 703 VCR SIR DUKE 914
 VCR MISS DELAY 560

January 2017 Australasian Charolais GROUP BREEDPLAN										
 EBVs Acc	CALVING EASE				GROWTH & MATERNAL					
	DIR	DTRS	GL	BWT	200	400	600	MWT	MILK	
	18.3 67%	-3.5 56%	-9.6 93%	-4 92%	25 86%	39 87%	51 84%	41 75%	4 63%	
EBVs Acc	FERTILITY				CARCASS					
	SS	DC	CWT	RIB	RUMP	EMA	RBY	IMF		
	5 83%	-	31 73%	0.5 77%	1.4 76%	1.4 63%	-0.4 68%	0.7 63%		
\$INDEXES	Dom. (\$)	Export (\$)		Live Export (\$)						
	+\$66	+\$96		+\$44						




This is our 3rd year using this great sire - he has proven himself many times over. Now one of the breeds best proven bulls globally. Study his data and you see why -top 15% ema, top 1% for growth, calving ease, milk, and scrotal (ranked #1 in the breed), also his progeny have been super docile.

PARINGA HARVEY H338 (AI) (ET) (P)

Birth Date: 11/08/2012 Society Id: TOLH0338E Sex: M Poll/Horn: Polled

S \$ MONTANA SILVER \$CECILE COBB
Sire: NWMSU DOC SILVER 362 PLD \$STAGE'S MISS DC BAR
 NWMSU DOLORES ET 0035 HCR FLASH 5074
 BCCR DOLORES 337

LT BLUEGRASS 4017P LT ASSERTION 1277
Dam: PARINGA BLUEGRASS D140 (AI) (ET) (P) LT PEARLS BREEZE 2236
 FERNVALE ZHIRL Z62 FERNVALE UPHILL
 FERNVALE WHIRL

January 2017 Australasian Charolais GROUP BREEDPLAN										
	CALVING EASE				GROWTH & MATERNAL					
	DIR	DTRS	GL	BWT	200	400	600	MWT	MILK	
EBVs	19.4	6.5	-6.6	-3.8	15	36	39	32	16	
Acc	59%	50%	78%	78%	73%	77%	73%	70%	61%	
	FERTILITY				CARCASS					
	SS	DC	CWT	RIB	RUMP	EMA	RBY	IMF		
EBVs	2.8	-	28	1.4	2.3	2.3	-1.2	1.6		
Acc	80%	-	67%	69%	69%	62%	66%	62%		
\$INDEXES	Dom. (\$)	Export (\$)	Live Export (\$)							
	+\$81	+\$107	+\$39							



The Harvey sons are a real highlight in this sale. Check out L410, an amazing individual who reflects the true potential of Harvey. Harvey is, in my opinion, another breed changer like Paringa D213 was many years ago. We have witnessed an incredibly early growth pattern in Harvey progeny. Paringa Harvey is currently ranked #3 bull/sires on Charolais Database for Domestic Index.

BRANCH VIEW HOWLER (P)

Birth Date: 30/11/2012 Society Id: BVCH118E Sex: M


Poll/Horn: Polled

MOONGOOL YELLOW STONE (P)
Sire: BRANCH VIEW DYNAMO (P)
 BRANCH VIEW ULTIMATE Z19E

SEDALIA VICTORY (AI) (ET)
 MOONGOOL TRACEY (P)
 ROSCOE WARLORD (AI) (ET)
 BRANCH VIEW ULTIMATE (AI) (P)

AMBERLEY CAIN (P)
Dam: BRANCH VIEW A TOUCH OF CLASS E10 (P/S)
 BRANCH VIEW C113E

AMBERLEY ZACHARIAH (AI) (P)
 AMBERLEY WALLAROO (H)
 BRANCH VIEW Z83E
 BRANCH VIEW A TOUCH OF CLASS A83 (AI) (ET)

January 2017 Australasian Charolais GROUP BREEDPLAN									
	CALVING EASE				GROWTH & MATERNAL				
	DIR	DTRS	GL	BWT	200	400	600	MWT	MILK
EBVs	5.6	4.6	0.2	1.6	16	31	40	43	0
Acc	42%	36%	37%	55%	64%	67%	61%	56%	44%
	FERTILITY				CARCASS				
	SS	DC	CWT	RIB	RUMP	EMA	RYB	IMF	
EBVs	0.9	-	22	0.5	0.6	1.4	0.1	0.3	
Acc	67%	-	55%	52%	52%	39%	47%	40%	
\$INDEXES	Dom. (\$)	Export (\$)		Live Export (\$)					
	+\$38	+\$53		+\$25					



Bred by the Postle family in Queensland, we have enjoyed breeding with Howler for his fertility, structural soundness, ability to work hard and easy care Charolais he produces. We have had great success with the Branchview cattle, the purchase of Howler as stud sire gave us the opportunity to secure some different polled lineage, including the Moongool Yellowstone in Howler's pedigree.

The progeny by Howler have taken our Charolais to another level, and given customers a new angle. Check out sale bull L380E and you will see what we are talking about.

ASHWOOD PARK EXECUTIVE H77E (P)

Birth Date: 14/04/2012 Society Id: HASH77E Sex: M


Poll/Horn: Polled

VIOLET HILLS BARCLAY
Sire: VIOLET HILLS EXECUTIVE (P)
 VIOLET HILLS Y0011E

POURIWAI S378
 VIOLET HILLS X0119E
 VIOLETHILLS URBANE
 VIOLET HILLS RAE

S\$ MONTANA SILVER
Dam: ASHWOOD PARK ANGEL 2 (AI) (P)
 ASHWOOD PARK ANGEL

\$CECILE COBB
 \$ STAGE'S MISS DC BAR
 LHD CIGAR E46
 ASHWOOD PARK MISS UNIVERSE

January 2017 Australasian Charolais GROUP BREEDPLAN										
	CALVING EASE				GROWTH & MATERNAL					
	DIR	DTRS	GL	BWT	200	400	600	MWT	MILK	
	EBVs	10	11.7	-3.5	-0.8	9	18	20	27	7
Acc	53%	41%	54%	76%	71%	67%	68%	65%	51%	
	FERTILITY				CARCASE					
	SS	DC	CWT	RIB	RUMP	EMA	RBY	IMF		
	EBVs	1	-	10	-0.1	0	-0.3	-0.3	-0.2	
Acc	53%	-	57%	56%	56%	46%	51%	45%		
\$INDEXES										
	Dom. (\$)	Export (\$)	Live Export (\$)							
	+\$39	+\$51	+\$17							



Executive J83 is a full brother to H77, with the same royal pedigree. He is a massive, but easy doing and free moving individual. His progeny exhibit his many beautiful traits. Executive has worked well over our Doc Silver and Easy Gain females.

ASCOT LEDGER J26E (AI) (P)

Birth Date: 10/08/2013 Society Id: JAJJ26E Sex: M


Poll/Horn: Polled

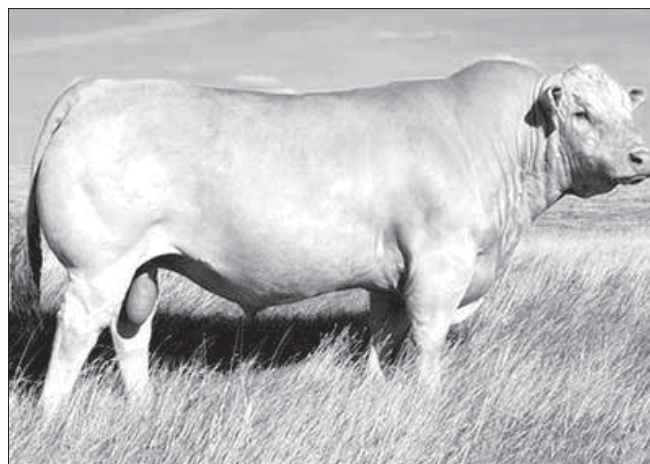
LT BLUEGRASS 4017P
Sire: LT LEDGER 0332 (P)
 LT BRENDA 6120 PLD

LT ASSERTION 1277
 LT PEARLS BREEZE 2236
 LT RIO BRAVO 3181P
 LT BRENDA'S EASE 3055 PLD

NWMSU DOC SILVER 362 PLD
Dam: ASCOT JAJG0163 (AI) (ET) (P)
 ROSEDALE BOBBIN Y074

S \$ MONTANA SILVER
 NWMSU DOLORES ET 0035
 FERNVALE TRAPPER
 ROSEDALE BOBBIN U97 (P)

January 2017 Australasian Charolais GROUP BREEDPLAN									
	CALVING EASE				GROWTH & MATERNAL				
	DIR	DTRS	GL	BWT	200	400	600	MWT	MILK
EBVs	18	4.9	-4.5	-4.4	10	23	27	4	15
Acc	57%	44%	75%	75%	69%	70%	67%	64%	50%
	FERTILITY				CARCASS				
	SS	DC	CWT	RIB	RUMP	EMA	RYB	IMF	
EBVs	3	-	19	1.6	2.8	2.3	-1.2	1.3	
Acc	75%	-	60%	62%	61%	55%	59%	55%	
\$INDEXES	Dom. (\$)		Export (\$)		Live Export (\$)				
	+\$69		+\$93		+\$33				



Grand Sire, LT Ledger

The pedigree of this herd sire is really exciting. We purchased this young bull from Jim and Jackie to back up AI on our heifers. J26E's progeny are some of the easiest doing cattle we have ever had. We have found him to breed easily, calve easily, with docility and structural soundness.

Check out his son in the sale L361E and you will see what I am talking about.

ASHWOOD PARK EXECUTIVE J83E (P)

Birth Date: 17/04/2013 Society Id: HASJ83E Sex: M Poll/Horn: Polled

VIOLET HILLS BARCLAY
Sire: VIOLET HILLS EXECUTIVE (P)
 VIOLET HILLS Y0011E

POURIWAI S378
 VIOLET HILLS X0119E
 VIOLETHILLS URBANE
 VIOLET HILLS RAE
 \$CECILE COBB
 \$ STAGE'S MISS DC BAR
 LHD CIGAR E46
 ASHWOOD PARK MISS UNIVERSE

\$S MONTANA SILVER
Dam: ASHWOOD PARK ANGEL 1 (AI) (ET) (P)
 ASHWOOD PARK ANGEL

January 2017 Australasian Charolais GROUP BREEDPLAN										
	CALVING EASE				GROWTH & MATERNAL					
	DIR	DTRS	GL	BWT	200	400	600	MWT	MILK	
EBVs	-1.3	7.5	-3.2	1	12	29	39	48	8	
Acc	58%	43%	53%	80%	72%	74%	72%	68%	52%	
	FERTILITY				CARCASS					
	SS	DC	CWT	RIB	RUMP	EMA	RBV	IMF		
EBVs	1.2	-	20	0.8	1.3	0.5	-0.4	-0.3		
Acc	76%	-	63%	60%	59%	54%	58%	52%		
\$INDEXES	Dom. (\$)	Export (\$)	Live Export (\$)							
	+\$28	+\$39	+\$19							



Executive J83 is effectively a full brother to H77, with the same royal pedigree. He is a massive, but easy doing and free moving individual. His progeny exhibit his many beautiful traits. Executive has worked well over our Doc Silver and Easy Gain females.

LT STAGECOACH 8068 PLD (P)

Birth Date: 11/03/2008 Society Id: OAUD7606E Sex: M Poll/Horn: Polled

LT WESTERN SPUR 2061
Sire: LT WESTERN EDGE 4057 PLD
 LT DUCHESS OF MAC 7076

EATONS PREDICTOR 9230
 LT MAIDEN'S BREEZE 8242P
 BBCR DUKE'S SON 786
 BBCR MAXINE 429

LY WYOMING WIND 4020
Dam: LT LADY MACBETH 2131 PLD
 LT LADY MACBETH 8413

SCHURRTOP 5627
 LT CHAP'S LADY 217
 WCR SIR FAB MAC 089
 LCR MISS LINDSKOV 7131

January 2017 Australasian Charolais GROUP BREEDPLAN										
	CALVING EASE				GROWTH & MATERNAL					
	DIR	DTRS	GL	BWT	200	400	600	MWT	MILK	
EBVs	11.5	7.2	-6.9	-3.6	9	34	36	15	25	
Acc	65%	54%	84%	83%	71%	71%	70%	67%	59%	
	FERTILITY				CARCASS					
	SS	DC	CWT	RIB	RUMP	EMA	RBV	IMF		
EBVs	3.2	-	23	2.6	3.7	-0.6	-2.5	0.5		
Acc	67%	-	61%	61%	61%	54%	57%	54%		
\$INDEXES	Dom. (\$)	Export (\$)	Live Export (\$)							
	+\$70	+\$91	+\$32							



Top Bull. Used only for ET, but we are keen to use him again because we have seen the results first hand.

LT VENTURE 3198 (P)

Birth Date: 11/03/2013 Society Id: OAUJ5612E Sex: M Poll/Horn: Polled

LT WESTERN EDGE 4057 PLD
Sire: LT STAGECOACH 8068 PLD (P)
 LT LADY MACBETH 2131 PLD

LT WESTERN SPUR 2061
 LT DUCHESS OF MAC 7076
 LT WYOMING WIND 4020
 LT LADY MACBETH 8413

LT EASY PRO 1158 (P)
Dam: LT BALLET 9219 (P)
 LT BALLET 6233

LT UNLIMITED EASE 9108 (US)
 LT LADY MACBETH 8413
 EATONS LEADER 2233P
 LT BALLET 0024

January 2017 Australasian Charolais GROUP BREEDPLAN										
	CALVING EASE				GROWTH & MATERNAL					
	DIR	DTRS	GL	BWT	200	400	600	MWT	MILK	
EBVs	16.8	5.9	-6.7	-4.1	14	33	35	8	16	
Acc	60%	41%	83%	82%	74%	75%	68%	63%	46%	
	FERTILITY				CARCASS					
	SS	DC	CWT	RIB	RUMP	EMA	RBV	IMF		
EBVs	2.3	-	28	2	2.6	1.1	-1.1	-0.1		
Acc	71%	-	60%	62%	62%	50%	55%	50%		
\$INDEXES	Dom. (\$)	Export (\$)	Live Export (\$)							
	+\$70	+\$91	+\$35							



This Autumn sale sees some of the first LT Venture sons to sell in Australia. We have found him to be has great feet and structure and very docile with a high muscle pattern. An interesting outcross pedigree from the renowned LT Herd, selling for \$50,000 USD in 2014.



CHAROLAIS

SALE LOTS QUICK SUMMARY

Lot	Tag	Name	DIR	DTRS	GL	BWT	200	400	600	MCW	MILK	SS	CWT	RIB	RUMP	EMA	RBV	IMF	DOM
1	L0319	PARINGA EXECUTIVE L319	17.0	10.8	-5.1	-3.1	9	21	21	8	13	1.6	17	0.5	1.0	1.5	-0.3	0.5	62
2	L0320	PARINGA FREE LUNCH L320	14.4	-3.2	-7.6	-2.5	21	32	39	22	5	3.7	25	1.3	2.3	1.9	-0.6	0.6	57
3	L0339	PARINGA STAGECOACH L339	11.1	1.8	-6.2	-2.2	13	30	32	11	15	2.8	21	2.4	3.5	0.9	-1.6	0.5	59
4	L0361	PARINGA LEDGER L361	12.6	-1.6	-6.7	-3.1	15	29	41	16	13	2.5	22	1.7	2.7	1.7	-1.3	1.1	56
5	L0380	PARINGA HOWLER L380	8.9	6.7	-4.0	-0.8	11	24	32	34	8	1.3	18	1.1	1.7	-0.1	-1.1	0.3	44
6	L0384	PARINGA HARVEY L384	17.8	-0.1	-9.5	-3.0	19	41	46	41	13	2.6	30	1.4	2.5	2.3	-1.1	1.4	73
7	L0409	PARINGA HARVEY L409	15.4	3.5	-5.3	-3.3	7	24	29	14	16	2.0	21	1.1	1.8	1.2	-1.2	1.4	62
8	L0410	PARINGA HARVEY L410	10.3	-2.0	-5.6	-2.0	18	40	53	36	12	2.9	31	1.4	2.2	2.0	-1.0	1.5	63
9	L0417	PARINGA HARVEY L417	11.3	-1.2	-5.1	-1.7	19	43	54	46	11	3.1	34	1.7	2.8	2.6	-0.9	1.4	69
10	L0400	PARINGA VENTURE L400	18.6	7.8	-5.8	-4.7	12	31	31	-13	15	2.0	26	2.5	3.9	2.9	-0.8	0.5	79
11	L0401	PARINGA VENTURE L401	21.1	8.3	-7.3	-5.7	10	23	22	-10	19	2.4	22	1.4	2.1	1.9	-0.7	0.5	73
12	L0414	PARINGA VENTURE L414	12.4	2.9	-5.4	-2.2	17	38	44	20	13	1.4	24	2.4	3.8	1.1	-1.8	0.8	65
13	L0418	PARINGA VENTURE L418	18.5	7.1	-5.7	-5.0	7	18	18	-16	14	1.4	18	1.9	2.6	0.6	-1.2	0.1	62
14	L0402	PARINGA EXECUTIVE J83 L402	12.0	7.0	-6.6	-2.1	9	22	28	-1	9	1.3	19	1.8	2.7	2.5	-0.3	0.2	54
15	L0403	PARINGA EXECUTIVE J83 L403	-1.1	6.9	-3.8	-0.2	11	22	30	29	7	2.7	15	1.5	2.3	-0.3	-1.3	0.3	29
16	L0404	PARINGA EXECUTIVE J83 L404	5.3	2.8	-3.3	0.1	16	39	49	58	13	1.7	26	0.6	1.0	0.2	-1.0	0.7	47
17	L0406	PARINGA EXECUTIVE J83 L406	5.8	4.4	-5.3	0.2	20	43	51	56	7	2.0	27	0.7	1.5	-0.2	-1.1	0.4	50
18	L0407	PARINGA EXECUTIVE J83 L407	9.6	4.7	-5.0	-2.1	4	17	16	9	8	1.1	10	1.1	2.1	0.3	-1.3	0.7	42
19	L0408	PARINGA EXECUTIVE J83 L408	5.8	1.8	-6.0	-1.3	11	18	28	7	8	0.5	13	0.9	1.4	1.3	-0.1	0.2	31
20	L0411	PARINGA EXECUTIVE J83 L411	4.0	0.1	-2.6	0.1	13	26	37	35	10	0.9	17	1.5	2.6	1.6	-0.7	0.5	36
21	L0412	PARINGA EXECUTIVE J83 L412	10.3	7.0	-4.3	-1.6	10	20	26	24	12	1.3	17	1.6	2.3	1.9	-0.6	0.5	50
22	L0413	PARINGA EXECUTIVE J83 L413	7.8	5.7	-4.9	-1.4	11	27	34	19	9	1.6	15	2.2	3.7	0.9	-1.6	0.8	53
23	L0415	PARINGA EXECUTIVE J83 L415	11.4	5.0	-4.7	-2.2	7	17	17	10	11	-0.3	12	1.1	2.0	1.0	-1.2	1.1	45
24	L0416	PARINGA EXECUTIVE J83 L416	13.7	10.1	-4.7	-2.6	7	18	19	12	11	2.0	14	0.5	1.0	0.8	-0.6	0.4	53
25	L0419	PARINGA EXECUTIVE J83 L419	9.2	7.5	-3.9	-0.9	13	31	38	44	12	1.8	21	0.8	1.4	0.2	-1.2	0.7	53
26	M0342	PARINGA LEDGER M342	12.4	1.7	-5.3	-2.1	15	32	42	22	12	1.9	23	1.1	1.8	2.4	-0.5	1.1	59
27	M0345	PARINGA LEDGER M345	10.7	1.4	-4.3	-1.1	19	38	48	35	10	2.7	27	1.6	2.6	2.0	-1.0	0.9	61
28	M0348	PARINGA LEDGER M348	11.4	-0.9	-5.5	-2.7	11	24	33	5	13	2.7	19	1.7	2.6	1.7	-1.1	1.0	52
29	M0339	PARINGA HOWLER M339	5.1	-0.3	-1.4	1.1	14	27	36	33	4	0.7	17	1.0	1.7	1.9	-0.3	0.7	34
30	M0340	PARINGA HOWLER M340	5.6	2.8	-3.7	1.1	20	40	51	54	3	1.6	27	0.9	1.4	1.0	-0.5	0.4	46
31	M0341	PARINGA HOWLER M341	-2.4	1.5	-2.5	1.4	18	39	51	51	11	1.6	26	0.9	1.3	0.6	-0.5	0.3	32
32	M0344	PARINGA HOWLER M344	-0.9	-0.5	-2.0	1.5	16	35	45	41	3	1.9	24	1.8	2.6	1.2	-0.7	0.3	34
33	M0346	PARINGA HOWLER M346	8.1	1.1	-3.4	0.0	16	36	45	36	8	1.1	24	2.1	3.4	1.9	-1.0	0.7	54
34	M0350	PARINGA HOWLER M350	7.9	4.1	-2.8	-0.1	15	33	40	32	9	1.0	22	1.4	2.3	1.4	-0.8	0.7	50
35	M0332	PARINGA EXECUTIVE J83 M332	8.7	6.0	-4.5	-1.5	13	31	38	32	11	0.7	24	1.1	1.9	1.2	-0.8	0.6	53
36	M0333	PARINGA EXECUTIVE J83 M333	7.2	1.8	-3.6	-0.5	12	29	35	42	8	1.8	18	0.8	1.3	0.2	-0.9	0.4	42
37	M0334	PARINGA EXECUTIVE J83 M334	6.3	8.2	-4.8	-0.8	14	35	42	40	12	1.1	25	0.4	0.6	0.2	-0.7	0.1	47
38	M0335	PARINGA EXECUTIVE J83 M335	1.5	6.6	-4.0	-0.6	9	21	26	23	8	2.2	13	1.0	1.6	-0.2	-1.1	0.3	31
39	M0336	PARINGA EXECUTIVE J83 M336	11.8	7.5	-5.4	-0.8	14	36	45	47	13	1.6	28	0.5	0.8	1.5	-0.2	0.3	59
40	M0337	PARINGA EXECUTIVE J83 M337	5.5	1.2	-3.3	0.0	13	31	37	46	8	1.8	19	0.8	1.3	0.2	-0.9	0.4	40
Paringa Charolais Sale Average			9.6	3.6	-4.8	-1.5	13	30	36	26	10	1.8	21	1.3	2.1	1.2	-0.9	0.6	\$52
Breed Average (2014 Born Calves)			1.0	0.7	-2.4	0.5	12	23	31	33	7	1.0	19	0.2	0.3	1.5	0.2	0.2	\$22
Top Ranking %			10%	25%	10%	10%	35%	20%	5%	65%	20%	10%	35%	5%	5%	65%	90%	10%	5%



2017 AUTUMN SALE

CHAROLAIS SALE LOTS

LOT 1 PARINGA EXECUTIVE L319 (AI)(P)

DOB: 17/03/2015 Society Id: TOLL319E Id: L0319 Sex: M Poll/Horn: PP(98%) Breed: CC100

VIOLET HILLS EXECUTIVE (P)
Sire: ASHWOOD PARK EXECUTIVE H77E (P)
ASHWOOD PARK ANGEL 2 (AI) (P)

VIOLET HILLS BARCLAY
VIOLET HILLS Y0011E
SS MONTANA SILVER
ASHWOOD PARK ANGEL



NWMSU DOC SILVER 362 PLD
Dam: PARINGA DOC SILVER G431
PARINGA BLUEGRASS D132 (AI) (ET) (P)

S \$ MONTANA SILVER
NWMSU DOLORES ET 0035
LT BLUEGRASS 4017P
PARINGA NEW TREND A81 AI



JANUARY 2017 CHAROLAIS GROUP BREEDPLAN EBVs										
EBVs	CALVING EASE				GROWTH & MATERNAL					
	DIR	DTRS	GL	BWT	200	400	600	MWT	MILK	
Acc	17.1	10.4	-4.9	-3.1	7	18	17	5	13	
	37%	32%	48%	66%	52%	51%	52%	50%	38%	
EBVs	FERTILITY				CARCASS					
	SS	DC	CWT	RIB	RUMP	EMA	RBV	IMF		
Acc	1.5		14	0.3	0.7	1.4	-0.2	0.4		
	40%		43%	43%	43%	36%	40%	36%		

\$INDEXES	Dom. (\$)	Export (\$)	Live Export (\$)	\$PROFIT
	58	74	24	\$9,204

A really interesting bull; from a stud stand point, no other bull matches him on Direct Calving Ease and Daughter Calving Ease. A rare combination found in any breed. Indexes place him almost top 1% on Domestic Index. L319E is a well balanced bull with an earlier maturity pattern. All in all a very handy bull.

LOT 2 PARINGA FREE LUNCH L320 (ET)(P)

DOB: 24/03/2015 Society Id: TOLL320E Id: L0320 Sex: M Poll/Horn: PH(98%) Breed: CC100

LT RIO BLANCO 1234 P (P)
Sire: VPI FREE LUNCH 708T
VPI MISS DUCHESS 404 P

WCR PRIME CUT 764 PLD PMC223447 (P)
LT PRAIRIE MAID 4054
WCR PRIME CUT 764
VCR MISS DUCHESS 703

LT THUNDERING WIND 5200P (US) (P)
Dam: PARINGA THUNDERING WIND H402
PARINGA BLUEGRASS D120 (AI) (ET) (P)

LY WYOMING WIND 4020
LT EASES PEARL 9034
LT BLUEGRASS 4017P
FERNVALE YEMPTRESS Y101

JANUARY 2017 CHAROLAIS GROUP BREEDPLAN EBVs										
EBVs	CALVING EASE				GROWTH & MATERNAL					
	DIR	DTRS	GL	BWT	200	400	600	MWT	MILK	
Acc	14.4	-3.2	-7.6	-2.5	21	32	39	22	5	
	%	%	%	%	%	%	%	%	%	
EBVs	FERTILITY				CARCASS					
	SS	DC	CWT	RIB	RUMP	EMA	RBV	IMF		
Acc	3.7		25	1.3	2.3	1.9	-0.6	0.6		
	%		%	%	%	%	%	%		

\$INDEXES	Dom. (\$)	Export (\$)	Live Export (\$)	\$PROFIT
	57	80	36	\$7,643

L320E has been a crowd favourite by many, and at +21 for weaning weight puts him in the elite range for weaner and feeder production. Very good bull with excellent structure and docility.

LOT 3 PARINGA STAGECOACH L339 (ET)(P)

DOB: 12/02/2015 Society Id: TOLL339E Id: L0339 Sex: M Poll/Horn: PP(98%) Breed: CC100

LT WESTERN EDGE 4057 PLD
Sire: LT STAGECOACH 8068 PLD (P)
LT LADY MACBETH 2131 PLD

LT WESTERN SPUR 2061
LT DUTCHESS OF MAC 7076
LT WYOMING WIND 4020
LT LADY MACBETH 8413



LT THUNDERING WIND 5200P (US) (P)
Dam: PARINGA THUNDERING WIND H402
PARINGA BLUEGRASS D120 (AI) (ET) (P)

LT WYOMING WIND 4020 PLD (US)
LT EASE'S PEARL 9034 PLD
LT BLUEGRASS 4017P
FERNVALE YEMPTRESS Y101

JANUARY 2017 CHAROLAIS GROUP BREEDPLAN EBVs										
EBVs	CALVING EASE				GROWTH & MATERNAL					
	DIR	DTRS	GL	BWT	200	400	600	MWT	MILK	
Acc	11	2.5	-6.2	-2.2	13	29	31	9	15	
	43%	37%	58%	58%	51%	52%	50%	48%	42%	
EBVs	FERTILITY				CARCASS					
	SS	DC	CWT	RIB	RUMP	EMA	RBV	IMF		
Acc	2.8		21	2.4	3.4	0.9	-1.6	0.5		
	45%		45%	47%	47%	40%	44%	41%		

\$INDEXES	Dom. (\$)	Export (\$)	Live Export (\$)	\$PROFIT
	58	77	29	\$6,589

L339E has always been a stand out in his mob, note his very positive fat. We have used L339E heavily as a back-up bull after AI in our herd, so he will present a bit leaner than the rest on sale day. He is a very good worker. Terrific bull, do not overlook.

LOT 4 PARINGA LEDGER L361 (AI)(P)

DOB: 10/09/2015 Society Id: TOLL361E Id: L0361 Sex: M Poll/Horn: PP(98%) Breed: CC100

LT LEDGER 0332 (P)
Sire: **ASCOT LEDGER J26E (AI) (P)**
ASCOT JAJG0163 (AI) (ET) (P)

LT BLUEGRASS 4017P
LT BRENDA 6120 PLD
NWMSU DOC SILVER 362 PLD
ROSDALE BOBBIN Y074



LT LONG DISTANCE 9001 PLD
Dam: **PARINGA LONG DISTANCE J394**
PARINGA RIO G473

LT SILVER DISTANCE 5342
LT BELLE 7026
LT RIO BRAVO 3181P
ROSDALE BOBBIN Y074



JANUARY 2017 CHAROLAIS GROUP BREEDPLAN EBVs										
EBVs	CALVING EASE				GROWTH & MATERNAL					
	DIR	DTRS	GL	BWT	200	400	600	MWT	MILK	
Acc	12.6	-1.6	-6.7	-3.1	15	29	41	16	13	
	%	%	%	%	%	%	%	%	%	
EBVs	FERTILITY				CARCASS					
	SS	DC	CWT	RIB	RUMP	EMA	RBV	IMF		
Acc	2.5		22	1.7	2.7	1.7	-1.3	1.1		
	%		%	%	%	%	%	%		
\$INDEXES										
	Dom. (\$)	Export (\$)	Live Export (\$)	\$PROFIT						
	56	79	36	\$9,734						

Another very good young bull from a Long Distance female. This Homozygous polled bull as we have mentioned before, is a beautiful ,soft, easy doing, structurally correct bull with excellent docility. Dam is a beautiful ,big volumed female.

LOT 5 PARINGA HOWLER L380 (P)

DOB: 17/09/2015 Society Id: TOLL380E Id: L0380 Sex: M Poll/Horn: PP(98%) Breed: CC100

BRANCH VIEW DYNAMO (P)
Sire: **BRANCH VIEW HOWLER (P)**
BRANCH VIEW A TOUCH OF CLASS E10 (P/S)

MOONGOOL YELLOW STONE (P)
BRANCH VIEW ULTIMATE Z19E
AMBERLEY CAIN (P)
BRANCH VIEW C113E



SILVERSTREAM COLORADO C26
Dam: **PARINGA COLORADO F388**
PARINGA WESTERN SPUR D272

SILVERSTREAM TALISMAN T79
SILVERSTREAM U20
LT WESTERN SPUR 2061
MOUNTVIEW LAZY GIRL 2 (AI) (P)



JANUARY 2017 CHAROLAIS GROUP BREEDPLAN EBVs										
EBVs	CALVING EASE				GROWTH & MATERNAL					
	DIR	DTRS	GL	BWT	200	400	600	MWT	MILK	
Acc	8.9	6.7	-4	-0.8	11	24	32	33	8	
	34%	29%	40%	47%	48%	49%	46%	46%	39%	
EBVs	FERTILITY				CARCASS					
	SS	DC	CWT	RIB	RUMP	EMA	RBV	IMF		
Acc	1.3		18	1.1	1.7	-0.1	-1.1	0.3		
	44%		42%	39%	40%	33%	36%	34%		
\$INDEXES										
	Dom. (\$)	Export (\$)	Live Export (\$)	\$PROFIT						
	44	61	25	\$9,515						

Stud bull ALERT. This homozygous bull offers complete outcross genetics to modern polled Charolais genetics. He combines the best of Branchview Howler and the powerful Silverstream Colorado. L380E is faultless on his free movement, stand out docility, large testicles, and great length. This bull offers a lot to the future of modern Charolais genetics. Paringa retains 100% Semen Share

LOT 6 PARINGA HARVEY L384 (AI)(P)

DOB: 22/08/2015 Society Id: TOLL384E Id: L0384 Sex: M Poll/Horn: PH(87%) Breed: CC100

NWMSU DOC SILVER 362 PLD
Sire: **PARINGA HARVEY H338**
PARINGA BLUEGRASS D140 (AI) (ET) (P)

S \$ MONTANA SILVER
NWMSU DOLORES ET 0035
LT BLUEGRASS 4017P
FERNVALE ZHIRL Z62

LT RIO BRAVO 3181P
Dam: **PARINGA RIO G125**
PARINGA BLUEGRASS D125 (AI) (ET) (P)

LT RIO BLANCO 1234 P (P)
LT 7N OF DUKE 9083 PLD (P)
LT BLUEGRASS 4017P
BRANCH VIEW MADONNA A106E (P)



JANUARY 2017 CHAROLAIS GROUP BREEDPLAN EBVs										
EBVs	CALVING EASE				GROWTH & MATERNAL					
	DIR	DTRS	GL	BWT	200	400	600	MWT	MILK	
Acc	10.6	-3.7	-7.4	-0.6	19	40	49	55	8	
	45%	37%	73%	62%	62%	63%	60%	56%	45%	
EBVs	FERTILITY				CARCASS					
	SS	DC	CWT	RIB	RUMP	EMA	RBV	IMF		
Acc	2.2		31	0.4	1	2.4	-0.1	0.7		
	54%		53%	43%	42%	40%	41%	37%		
\$INDEXES										
	Dom. (\$)	Export (\$)	Live Export (\$)	\$PROFIT						
	51	68	36	\$10,078						

L384 has been our favourite since before weaning. He is a real stand out and highlights how productive our Charolais are. L384 is massive in every trait in a thick and powerful package with very high score on \$Profit Index. This bull has definite stud potential. Paringa retains 100% Semen Share



LOT 7 PARINGA HARVEY L409 (AI)

DOB: 23/08/2015 Society Id: TOLL409E Id: L0409 Sex: M Poll/Horn: HH(94%) Breed: CC100

NWMSU DOC SILVER 362 PLD
Sire: **PARINGA HARVEY H338**
PARINGA BLUEGRASS D140 (AI) (ET) (P)

S \$ MONTANA SILVER
NWMSU DOLORES ET 0035
LT BLUEGRASS 4017P
FERNVALE ZHIRL Z62

COOLEY S&W 9020P
Dam: **PARINGA COOLEY D251**
PARINGA DUKE Z1826 AI E/T TW R/F

EATONS LEADER 2233P
MS COOLEY SKY E 9020M
WCR SIR DUKE 835 (US)
GUNNADOO IRENE Q66D TW

JANUARY 2017 CHAROLAIS GROUP BREEDPLAN EBVs										
EBVs	CALVING EASE				GROWTH & MATERNAL					
	DIR	DTRS	GL	BWT	200	400	600	MWT	MILK	
EBVs	15.1	3.2	-4.9	-3.3	7	24	29	13	16	
Acc	40%	35%	73%	70%	61%	64%	60%	56%	44%	
EBVs	FERTILITY				CARCASS					
	SS	DC	CWT	RIB	RUMP	EMA	RBY	IMF		
EBVs	2		20	1	1.7	1.2	-1.1	1.4		
Acc	74%		53%	52%	51%	49%	52%	48%		
SINDEXES										
	Dom. (\$)	Export (\$)	Live Export (\$)		\$PROFIT					
	61	82	30		\$7,800					

L409 is the only horned bull in the sale. A really long, heavily muscled individual.



LOT 8 PARINGA HARVEY L410 (AI)(P)

DOB: 21/08/2015 Society Id: TOLL410E Id: L0410 Sex: M Poll/Horn: PP(98%) Breed: CC100

NWMSU DOC SILVER 362 PLD
Sire: **PARINGA HARVEY H338**
PARINGA BLUEGRASS D140 (AI) (ET) (P)

S \$ MONTANA SILVER
NWMSU DOLORES ET 0035
LT BLUEGRASS 4017P
FERNVALE ZHIRL Z62

LT LONG DISTANCE 9001 PLD
Dam: **PARINGA LONG DISTANCE J387**
BRADIARNA DUTCHES

LT SILVER DISTANCE 5342
LT BELLE 7026
BRUMAR ZACH
BRADIARNA X-KAZ



JANUARY 2017 CHAROLAIS GROUP BREEDPLAN EBVs										
EBVs	CALVING EASE				GROWTH & MATERNAL					
	DIR	DTRS	GL	BWT	200	400	600	MWT	MILK	
EBVs	10.5	-2.5	-5.2	-2.1	17	38	52	34	12	
Acc	40%	32%	72%	69%	60%	63%	59%	55%	40%	
EBVs	FERTILITY				CARCASS					
	SS	DC	CWT	RIB	RUMP	EMA	RBY	IMF		
EBVs	2.9		30	1.3	2.1	2	-1	1.5		
Acc	73%		52%	53%	52%	49%	52%	48%		
SINDEXES										
	Dom. (\$)	Export (\$)	Live Export (\$)		\$PROFIT					
	61	87	39		\$11,755					

This Harvey son is a true highlight of the sale. Another elite Homozygous polled bull from a two year old LT Long Distance young female that got the job done. L410 boasts the highest \$Profit score in the Charolais group, also top 1% on Domestic Index. Very special bull.



LOT 9 PARINGA HARVEY L417 (AI)(P)

DOB: 23/08/2015 Society Id: TOLL417E Id: L0417 Sex: M Poll/Horn: PP Breed: CC100

NWMSU DOC SILVER 362 PLD
Sire: **PARINGA HARVEY H338**
PARINGA BLUEGRASS D140 (AI) (ET) (P)

S \$ MONTANA SILVER
NWMSU DOLORES ET 0035
LT BLUEGRASS 4017P
FERNVALE ZHIRL Z62

VPI FREE LUNCH 708T
Dam: **PARINGA FREE LUNCH J369**
PARINGA COOLEY D251

LT RIO BLANCO 1234 P (P)
VPI MISS DUTCHES 404 P
COOLEY S&W 9020P
PARINGA DUKE Z1826 AI E/T TW R/F

JANUARY 2017 CHAROLAIS GROUP BREEDPLAN EBVs										
EBVs	CALVING EASE				GROWTH & MATERNAL					
	DIR	DTRS	GL	BWT	200	400	600	MWT	MILK	
EBVs	11	-1.5	-4.7	-1.7	18	42	53	45	12	
Acc	39%	32%	72%	69%	61%	64%	60%	55%	40%	
EBVs	FERTILITY				CARCASS					
	SS	DC	CWT	RIB	RUMP	EMA	RBY	IMF		
EBVs	3.1		34	1.6	2.7	2.6	-0.9	1.4		
Acc	73%		53%	54%	53%	49%	52%	49%		
SINDEXES										
	Dom. (\$)	Export (\$)	Live Export (\$)		\$PROFIT					
	68	94	41		\$10,227					

L417E is a lovely free moving Harvey H338E son, who recently grabbed our attention when processing for the sale. L417 is a very structurally correct and stylish easy doing bull. Along with a royal pedigree, they don't come much better than this. #2 ranked bull on Domestic Index.



Charolais Breed Average DIR 1.0 DTRS 0.7 GL -2.4 BW 0.5 200 12 400 23 600 31 MCW 33 MILK 7 SS 1.0 CWT 19 RIB 0.2 RUMP 0.3 EMA 1.5 RBY 0.2 IMF 0.2 EXP \$30 NTI \$17 DOM \$22 \$P \$7671

LOT 10 PARINGA VENTURE L400 (AI)(P)

DOB: 27/08/2015 Society Id: TOLL400E Id: L0400 Sex: M Poll/Horn: PP(95%) Breed: CC100

LT STAGECOACH 8068 PLD (P)
Sire: **LT VENTURE 3198 (P)**
LT BALLET 9219 (P)

LT WESTERN EDGE 4057 PLD
LT LADY MACBETH 2131 PLD
LT EASY PRO 1158 (P)
LT BALLET 6233



PARINGA RIO BRAVO D213E (AI) (P)
Dam: **PARINGA D213 G319**
PARINGA RC CHARLIE E312 AI ET (P)

LT RIO BRAVO 3181P
PARINGA CIGAR B064 AI ET
RC CHARLIE 0327
MS COOLEY JACKPOT 518M7



JANUARY 2017 CHAROLAIS GROUP BREEDPLAN EBVs										
	CALVING EASE				GROWTH & MATERNAL					
	DIR	DTRS	GL	BWT	200	400	600	MWT	MILK	
EBVs	18.1	7.5	-5.5	-4.6	12	30	31	-14	15	
Acc	41%	32%	73%	70%	62%	65%	60%	58%	41%	
	FERTILITY				CARCASS					
	SS	DC	CWT	RIB	RUMP	EMA	RBV	IMF		
EBVs	2		26	2.4	3.9	2.9	-0.8	0.5		
Acc	72%		53%	54%	53%	49%	52%	48%		

\$INDEXES	Dom. (\$)	Export (\$)	Live Export (\$)	\$PROFIT
	77	100	39	\$10,372

A wow factor bull again! L400 is also homo polled and is one of the top animals in the entire Charolais database. These LT Venture bulls are first to sell in Australia, and are living up to their reputation. The dam of L400 is also a tremendous individual. Stud bull potential. This bull is ranked top 1% of 1%!

LOT 11 PARINGA VENTURE L401 (AI)(P)

DOB: 22/08/2015 Society Id: TOLL401E Id: L0401 Sex: M Poll/Horn: PP(98%) Breed: CC100

LT STAGECOACH 8068 PLD (P)
Sire: **LT VENTURE 3198 (P)**
LT BALLET 9219 (P)

LT WESTERN EDGE 4057 PLD
LT LADY MACBETH 2131 PLD
LT EASY PRO 1158 (P)
LT BALLET 6233



NWMSU DOC SILVER 362 PLD
Dam: **PARINGA DOC SILVER G298**
PARINGA BLUEGRASS D099 (AI) (ET) (P)

S \$ MONTANA SILVER
NWMSU DOLORES ET 0035
LT BLUEGRASS 4017P
PARINGA NEW TREND A81 AI

JANUARY 2017 CHAROLAIS GROUP BREEDPLAN EBVs										
	CALVING EASE				GROWTH & MATERNAL					
	DIR	DTRS	GL	BWT	200	400	600	MWT	MILK	
EBVs	20.7	8	-7.1	-5.6	10	22	22	-10	19	
Acc	42%	32%	73%	71%	62%	65%	60%	58%	41%	
	FERTILITY				CARCASS					
	SS	DC	CWT	RIB	RUMP	EMA	RBV	IMF		
EBVs	2.4		22	1.4	2	1.9	-0.7	0.5		
Acc	73%		53%	54%	53%	49%	52%	48%		

\$INDEXES	Dom. (\$)	Export (\$)	Live Export (\$)	\$PROFIT
	71	92	32	\$11,503

Another amazing homo polled LT Venture bull this time from a young Doc Silver female. L401 ticks a lot of boxes, and is currently +\$71 on Domestic Index (compared to Charolais Breed Average for 2014 born calves is +\$21).

"If you get the chance check out how well our bulls performed in the Charolais Crossbreeding Progeny Test (see page 6 of the catalogue). In 2 Cohorts, a selection of our bulls were compared against bulls from around the world, and analysed with scientific validation. We are passionate about the science behind breeding good honest cattle, and providing the facts, not fiction to our customers. The data collected through this on-going, independent and worthy project helps validate the production and carcass traits evident in the Charolais breed."

LOT 12 PARINGA VENTURE L414 (AI)(P)

DOB: 28/08/2015 Society Id: TOLL414E Id: L0414 Sex: M Poll/Horn: PP(98%) Breed: CC100

LT STAGECOACH 8068 PLD (P)
Sire: **LT VENTURE 3198 (P)**
LT BALLET 9219 (P)

LT WESTERN EDGE 4057 PLD
LT LADY MACBETH 2131 PLD
LT EASY PRO 1158 (P)
LT BALLET 6233



PARINGA RIO BRAVO D213E (AI) (P)
Dam: **PARINGA D213 G271**
PARINGA RC CHARLIE E312 AI ET (P)

LT RIO BRAVO 3181P
PARINGA CIGAR B064 AI ET
RC CHARLIE 0327
MS COOLEY JACKPOT 518M7



JANUARY 2017 CHAROLAIS GROUP BREEDPLAN EBVs										
	CALVING EASE				GROWTH & MATERNAL					
	DIR	DTRS	GL	BWT	200	400	600	MWT	MILK	
EBVs	11.8	2.5	-5.1	-2.1	17	38	43	20	13	
Acc	41%	32%	73%	70%	62%	64%	60%	58%	40%	
	FERTILITY				CARCASS					
	SS	DC	CWT	RIB	RUMP	EMA	RBV	IMF		
EBVs	1.4		24	2.4	3.8	1.1	-1.8	0.9		
Acc	72%		53%	53%	52%	48%	51%	48%		

\$INDEXES	Dom. (\$)	Export (\$)	Live Export (\$)	\$PROFIT
	64	83	36	\$9,381

A great line up of exceptional homo polled bulls in this year's sale. L414 features impressive visual traits and ranks in top 1% on Domestic Index. These bulls have earned their high rankings the hard way, proving their worth in large performance contemporary groups.

Charolais Breed Average DIR 1.0 DTRS 0.7 GL -2.4 BW 0.5 200 12 400 23 600 31 MCW 33 MILK 7 SS 1.0 CWT 19 RIB 0.2 RUMP 0.3 EMA 1.5 RBV 0.2 IMF 0.2 EXP \$30 NTI \$17 DOM \$22 \$P \$7671

LOT 13 PARINGA VENTURE L418 (AI)(P)


DOB: 27/08/2015 Society Id: TOLL418E Id: L0418 Sex: M Poll/Horn: PP(98%) Breed: CC100

LT STAGECOACH 8068 PLD (P)
Sire: LT VENTURE 3198 (P)
 LT BALLET 9219 (P)

LT WESTERN EDGE 4057 PLD
 LT LADY MACBETH 2131 PLD
 LT EASY PRO 1158 (P)
 LT BALLET 6233

LT LONG DISTANCE 9001 PLD
Dam: PARINGA LONG DISTANCE J386
 PARINGA D196 G278

LT SILVER DISTANCE 5342
 LT BELLE 7026
 PARINGA WESTERN SPUR D196 (AI) (ET) (P)
 PARINGA RIO BRAVO D208E (AI) (P)

JANUARY 2017 CHAROLAIS GROUP BREEDPLAN EBVs										
	CALVING EASE				GROWTH & MATERNAL					
	DIR	DTRS	GL	BWT	200	400	600	MWT	MILK	
EBVs	18.1	6.9	-5.5	-5.1	6	17	17	-17	15	
Acc	40%	29%	74%	70%	62%	65%	61%	56%	36%	
	FERTILITY				CARCASS					
	SS	DC	CWT	RIB	RUMP	EMA	RBY	IMF		
	1.4		17	1.8	2.5	0.6	-1.2	0.1		
	73%		52%	53%	52%	47%	51%	47%		
\$INDEXES	Dom. (\$)	Export (\$)	Live Export (\$)		\$PROFIT					
	60	79	27		\$7,653					

If you get the chance check out how well our bulls performed in the Charolais Crossbreeding Progeny Test (p8). In 2 Cohorts (p.8) our bulls were compared against bulls from around the world, and analysed with scientific validation. The data collected through this independent and worthy project helps validate the production and carcass traits evident in the Charolais Breed.

LOT 15 PARINGA EXECUTIVE J83 L403 (P)

DOB: 12/09/2015 Society Id: TOLL403E Id: L0403 Sex: M Poll/Horn: PP(98%) Breed: CC100


VIOLET HILLS EXECUTIVE (P)
Sire: ASHWOOD PARK EXECUTIVE J83E (P)
 ASHWOOD PARK ANGEL 1 (AI) (ET) (P)

VIOLET HILLS BARCLAY
 VIOLET HILLS Y0011E
 SS MONTANA SILVER
 ASHWOOD PARK ANGEL



HCR SUCCESS 6073 PLD
Dam: PARINGA SUCCESS G276
 PARINGA BLUEGRASS C141 AI (P)

SCHURRTOP HCR RANCHER 1304
 MISS HCR PRIME 3124
 LT BLUEGRASS 4017P
 COBRABALD VOLT X187

JANUARY 2017 CHAROLAIS GROUP BREEDPLAN EBVs										
	CALVING EASE				GROWTH & MATERNAL					
	DIR	DTRS	GL	BWT	200	400	600	MWT	MILK	
EBVs	-0.1	6.7	-3.8	-0.3	11	22	30	28	7	
Acc	40%	30%	47%	70%	61%	63%	60%	58%	41%	
	FERTILITY				CARCASS					
	SS	DC	CWT	RIB	RUMP	EMA	RBY	IMF		
EBVs	2.6		15	1.4	2.2	-0.3	-1.3	0.3		
Acc	72%		53%	52%	51%	48%	51%	48%		
\$INDEXES	Dom. (\$)	Export (\$)	Live Export (\$)		\$PROFIT					
	30	45	17		\$6,727					

A very smart homo polled Executive J83 son.

LOT 17 PARINGA EXECUTIVE J83 L406 (P)

DOB: 14/09/2015 Society Id: TOLL406E Id: L0406 Sex: M Poll/Horn: PP(98%) Breed: CC100


VIOLET HILLS EXECUTIVE (P)
Sire: ASHWOOD PARK EXECUTIVE J83E (P)
 ASHWOOD PARK ANGEL 1 (AI) (ET) (P)

VIOLET HILLS BARCLAY
 VIOLET HILLS Y0011E
 SS MONTANA SILVER
 ASHWOOD PARK ANGEL



VPI FREE LUNCH 708T
Dam: PARINGA FREE LUNCH J359
 PARINGA RIO D213 F365 (AI) (P)

LT RIO BLANCO 1234 P (P)
 VPI MISS DUCHESS 404 P
 PARINGA RIO BRAVO D213E (AI) (P)
 PARINGA A102A1S

JANUARY 2017 CHAROLAIS GROUP BREEDPLAN EBVs									
	CALVING EASE				GROWTH & MATERNAL				
	DIR	DTRS	GL	BWT	200	400	600	MWT	MILK
	EBVs	6.9	4.2	-5.3	0	20	42	51	55
Acc	40%	30%	50%	69%	60%	63%	61%	56%	38%
EBVs	FERTILITY			CARCASS					
	SS	DC	CWT	RIB	RUMP	EMA	RBY	IMF	
	2		27	0.6	1.4	-0.3	-1	0.4	
Acc	72%		52%	52%	51%	48%	51%	47%	
\$INDEXES									
	Dom. (\$)	Export (\$)	Live Export (\$)			\$PROFIT			
	51	67	32			\$7,108			

Study these bulls closely, beautiful, balanced numbers with exciting cutting edge pedigrees. Again, these J83s are very athletic with easy movement. This combination with Free Lunch dam works nicely. Check out his weaning EBV at +20!

LOT 14 PARINGA EXECUTIVE J83 L402 (P)


DOB: 4/09/2015 Society Id: TOLL402E Id: L0402 Sex: M Poll/Horn: PP Breed: CC100

VIOLET HILLS EXECUTIVE (P)
Sire: ASHWOOD PARK EXECUTIVE J83E (P)
 ASHWOOD PARK ANGEL 1 (AI) (ET) (P)

VIOLET HILLS BARCLAY
 VIOLET HILLS Y0011E
 SS MONTANA SILVER
 ASHWOOD PARK ANGEL

LT LONG DISTANCE 9001 PLD
Dam: PARINGA LONG DISTANCE J355
 PARINGA D213 G319

LT SILVER DISTANCE 5342
 LT BELLE 7026
 PARINGA RIO BRAVO D213E (AI) (P)
 PARINGA RC CHARLIE E312 AI ET (P)

JANUARY 2017 CHAROLAIS GROUP BREEDPLAN EBVs									
	CALVING EASE				GROWTH & MATERNAL				
	DIR	DTRS	GL	BWT	200	400	600	MWT	MILK
EBVs	13	6.8	-6.5	-2.3	8	21	27	-2	10
Acc	40%	30%	49%	69%	60%	63%	60%	56%	37%
	FERTILITY				CARCASS				
	SS	DC	CWT	RIB	RUMP	EMA	RBY	IMF	
EBVs	1.3		19	1.7	2.6	2.4	-0.3	0.2	
Acc	72%		52%	52%	51%	47%	51%	47%	
\$INDEXES									
	Dom. (\$)	Export (\$)	Live Export (\$)		\$PROFIT				
	55	73	30		6,487				

L402 is a slightly later younger bull from a good and trusted Long Distance two year old. The highest ranked Executive J83 in this sale. Free moving with extra muscle, L402 is worth the look.

LOT 16 PARINGA EXECUTIVE J83 L404 (P)


DOB: 16/11/2015 Society Id: TOLL404E Id: L0404 Sex: M Poll/Horn: PP Breed: CC100

VIOLET HILLS EXECUTIVE (P)
Sire: ASHWOOD PARK EXECUTIVE J83E (P)
 ASHWOOD PARK ANGEL 1 (AI) (ET) (P)

VIOLET HILLS BARCLAY
 VIOLET HILLS Y0011E
 SS MONTANA SILVER
 ASHWOOD PARK ANGEL

NWMSU DOC SILVER 362 PLD
Dam: PARINGA DOC SILVER H339
 PARINGA BLUEGRASS D285 (AI) (ET) (P)

S \$ MONTANA SILVER
 NWMSU DOLORES ET 0035
 LT BLUEGRASS 4017P
 FERNVALE ZHIRL Z62



JANUARY 2017 CHAROLAIS GROUP BREEDPLAN EBVs										
	CALVING EASE				GROWTH & MATERNAL					
	DIR	DTRS	GL	BWT	200	400	600	MWT	MILK	
EBVs	6.3	2.6	-3.2	-0.1	15	38	48	57	13	
Acc	42%	34%	46%	68%	60%	62%	60%	56%	42%	
	FERTILITY				CARCASS					
	SS	DC	CWT	RIB	RUMP	EMA	RBY	IMF		
EBVs	1.7		26	0.5	0.8	0.2	-1	0.7		
Acc	70%		52%	52%	51%	48%	51%	47%		
\$INDEXES	Dom. (\$)	Export (\$)	Live Export (\$)		\$PROFIT					
	48	64	29		\$6,984					

This bull's data represents this bull's potential, amongst a powerful group of individuals. Please note, this bull is a much later Spring calf.

LOT 18 PARINGA EXECUTIVE J83 L407 (P)

DOB: 27/09/2015 Society Id: TOLL407E Id: L0407 Sex: M Poll/Horn: PP(98%) Breed: CC100


VIOLET HILLS EXECUTIVE (P)
Sire: ASHWOOD PARK EXECUTIVE J83E (P)
 ASHWOOD PARK ANGEL 1 (AI) (ET) (P)

VIOLET HILLS BARCLAY
 VIOLET HILLS Y0011E
 SS MONTANA SILVER
 ASHWOOD PARK ANGEL



LT RIO BRAVO 3181P
Dam: PARINGA RIO BRAVO H337
 PARINGA BLUEGRASS D297 (AI) (ET) (P)

LT RIO BLANCO 1234 P (P)
 LT 7N OF DUKE 9083 PLD (P)
 LT BLUEGRASS 4017P
 FERNVALE ZHIRL Z62

JANUARY 2017 CHAROLAIS GROUP BREEDPLAN EBVS									
	CALVING EASE				GROWTH & MATERNAL				
	DIR	DTRS	GL	BWT	200	400	600	MWT	MILK
EBVs	10.4	4.4	-4.9	-2.3	4	16	16	8	9
Acc	41%	34%	46%	70%	61%	63%	61%	58%	42%
	FERTILITY				CARCASS				
	SS	DC	CWT	RIB	RUMP	EMA	RBY	IMF	
EBVs	1		10	1	1.9	0.3	-1.2	0.6	
Acc	72%		53%	53%	52%	49%	52%	48%	
\$INDEXES	Dom. (\$)	Export (\$)	Live Export (\$)		\$PROFIT				
	42	53	19		\$4,600				

Another interesting homo polled bull who ticks all the boxes; calving ease, growth and tremendous EMA and fats, with very high marbling. No Charolais bulls in the world have more potential to hit MSA every day of the week.

LOT 19 PARINGA EXECUTIVE J83 L408 (P)

DOB: 27/09/2015 Society Id: TOLL408E Id: L0408 Sex: M Poll/Horn: PP Breed: CC100

VIOLET HILLS EXECUTIVE (P)
Sire: **ASHWOOD PARK EXECUTIVE J83E (P)**
ASHWOOD PARK ANGEL 1 (AI) (ET) (P)

VIOLET HILLS BARCLAY
VIOLET HILLS Y0011E
SS MONTANA SILVER
ASHWOOD PARK ANGEL

LT LONG DISTANCE 9001 PLD
Dam: **PARINGA LONG DISTANCE J385**
PARINGA D213 G275

LT SILVER DISTANCE 5342
LT BELLE 7026
PARINGA RIO BRAVO D213E (AI) (P)
PARINGA BT SMART CHOICE E304 AI ET (P)

JANUARY 2017 CHAROLAIS GROUP BREEDPLAN EBVs										
EBVs	CALVING EASE				GROWTH & MATERNAL					
	DIR	DTRS	GL	BWT	200	400	600	MWT	MILK	
Acc	7.1	1.6	-6	-1.5	11	17	27	5	9	
	40%	30%	49%	69%	60%	63%	61%	56%	37%	
EBVs	FERTILITY				CARCASS					
	SS	DC	CWT	RIB	RUMP	EMA	RBV	IMF		
Acc	0.5		13	0.7	1.3	1.3	-0.1	0.2		
	72%		52%	52%	51%	47%	51%	47%		
\$INDEXES										
Dom. (\$)		Export (\$)		Live Export (\$)		\$PROFIT				
32		44		23		\$6,211				

Compare our bulls with breed average and it blows us away. Paringa pedigrees are stacked with proven, predictable genetics, with more reliable profitable outcomes. It shows in their data. Again, check out how Paringa bulls rank in the Progeny Test results for performance.

LOT 21 PARINGA EXECUTIVE J83 L412 (P)

DOB: 29/09/2015 Society Id: TOLL412E Id: L0412 Sex: M Poll/Horn: PP(96%) Breed: CC100

VIOLET HILLS EXECUTIVE (P)
Sire: **ASHWOOD PARK EXECUTIVE J83E (P)**
ASHWOOD PARK ANGEL 1 (AI) (ET) (P)

VIOLET HILLS BARCLAY
VIOLET HILLS Y0011E
SS MONTANA SILVER
ASHWOOD PARK ANGEL

NWMSU DOC SILVER 362 PLD
Dam: **PARINGA DOC SILVER G296**
PARINGA BLUEGRASS D140 (AI) (ET) (P)

S \$ MONTANA SILVER
NWMSU DOLORES ET 0035
LT BLUEGRASS 4017P
FERNVALE ZHIRL Z62

JANUARY 2017 CHAROLAIS GROUP BREEDPLAN EBVs										
EBVs	CALVING EASE				GROWTH & MATERNAL					
	DIR	DTRS	GL	BWT	200	400	600	MWT	MILK	
Acc	10.9	6.7	-4.1	-1.7	10	20	25	24	13	
	42%	34%	47%	70%	61%	64%	61%	59%	42%	
EBVs	FERTILITY				CARCASS					
	SS	DC	CWT	RIB	RUMP	EMA	RBV	IMF		
Acc	1.3		16	1.4	2.1	1.8	-0.6	0.5		
	73%		53%	53%	52%	49%	52%	49%		
\$INDEXES										
Dom. (\$)		Export (\$)		Live Export (\$)		\$PROFIT				
50		68		26		\$5,888				

Nice spread from birth to growth on this bull. Very low Birth Weight EBV. L412's dam is one of his my all-time favourites.

LOT 23 PARINGA EXECUTIVE J83 L415 (P)

DOB: 6/10/2015 Society Id: TOLL415E Id: L0415 Sex: M Poll/Horn: PH(98%) Breed: CC100

VIOLET HILLS EXECUTIVE (P)
Sire: **ASHWOOD PARK EXECUTIVE J83E (P)**
ASHWOOD PARK ANGEL 1 (AI) (ET) (P)

VIOLET HILLS BARCLAY
VIOLET HILLS Y0011E
SS MONTANA SILVER
ASHWOOD PARK ANGEL

LT RIO BRAVO 3181P
Dam: **PARINGA RIO BRAVO H330**
PARINGA BLUEGRASS D285 (AI) (ET) (P)

LT RIO BLANCO 1234 P (P)
LT 7N OF DUKE 9083 PLD (P)
LT BLUEGRASS 4017P
FERNVALE ZHIRL Z62

JANUARY 2017 CHAROLAIS GROUP BREEDPLAN EBVs										
EBVs	CALVING EASE				GROWTH & MATERNAL					
	DIR	DTRS	GL	BWT	200	400	600	MWT	MILK	
Acc	12.3	4.8	-4.7	-2.4	7	17	16	9	12	
	41%	35%	46%	68%	60%	64%	61%	58%	42%	
EBVs	FERTILITY				CARCASS					
	SS	DC	CWT	RIB	RUMP	EMA	RBV	IMF		
Acc	-0.3		12	1	1.9	1	-1.1	1.1		
	73%		53%	53%	52%	49%	52%	48%		
\$INDEXES										
Dom. (\$)		Export (\$)		Live Export (\$)		\$PROFIT				
46		56		21		\$6,543				

Our herd has come a long way from our first Sale around 15 years ago. We have made advances and been uncompromising in selecting the best balanced Charolais possible. The success of the Angus breed has been largely due to its predictability backed by progressive breeders. Coming from an Angus background, we set out to do the same with Paringa Charolais.

LOT 20 PARINGA EXECUTIVE J83 L411 (P)

DOB: 5/10/2015 Society Id: TOLL411E Id: L0411 Sex: M Poll/Horn: PP(95%) Breed: CC100

VIOLET HILLS EXECUTIVE (P)
Sire: **ASHWOOD PARK EXECUTIVE J83E (P)**
ASHWOOD PARK ANGEL 1 (AI) (ET) (P)

VIOLET HILLS BARCLAY
VIOLET HILLS Y0011E
SS MONTANA SILVER
ASHWOOD PARK ANGEL



PARINGA RIO BRAVO D213E (AI) (P)
Dam: **PARINGA RIO D213 F367 (AI) (P)**
BRADIARNA DEBBIE (P)

LT RIO BRAVO 3181P
PARINGA CIGAR B064 AI ET
NOLLER ZING R/F
KOORYONG XPICIT (P)

JANUARY 2017 CHAROLAIS GROUP BREEDPLAN EBVs										
EBVs	CALVING EASE				GROWTH & MATERNAL					
	DIR	DTRS	GL	BWT	200	400	600	MWT	MILK	
Acc	4.9	-0.2	-2.6	0	13	26	36	35	11	
	41%	33%	51%	70%	61%	64%	61%	58%	41%	
EBVs	FERTILITY				CARCASS					
	SS	DC	CWT	RIB	RUMP	EMA	RBV	IMF		
Acc	0.8		17	1.4	2.5	1.6	-0.7	0.4		
	72%		53%	53%	52%	49%	52%	48%		
\$INDEXES										
Dom. (\$)		Export (\$)		Live Export (\$)		\$PROFIT				
36		49		26		\$6,689				

Yet again here we have another homo polled bull with growth and muscle. Slightly younger than his mates.

LOT 22 PARINGA EXECUTIVE J83 L413 (P)

DOB: 15/11/2015 Society Id: TOLL413E Id: L0413 Sex: M Poll/Horn: PP Breed: CC100

VIOLET HILLS EXECUTIVE (P)
Sire: **ASHWOOD PARK EXECUTIVE J83E (P)**
ASHWOOD PARK ANGEL 1 (AI) (ET) (P)

VIOLET HILLS BARCLAY
VIOLET HILLS Y0011E
SS MONTANA SILVER
ASHWOOD PARK ANGEL

PARINGA RIO BRAVO D213E (AI) (P)
Dam: **PARINGA D213 G283**
PARINGA RC CHARLIE E312 AI ET (P)

LT RIO BRAVO 3181P
PARINGA CIGAR B064 AI ET
RC CHARLIE 0327
MS COOLEY JACKPOT 518M7

JANUARY 2017 CHAROLAIS GROUP BREEDPLAN EBVs										
EBVs	CALVING EASE				GROWTH & MATERNAL					
	DIR	DTRS	GL	BWT	200	400	600	MWT	MILK	
Acc	8.8	5.5	-4.8	-1.6	11	26	33	18	9	
	40%	32%	46%	67%	59%	62%	59%	55%	42%	
EBVs	FERTILITY				CARCASS					
	SS	DC	CWT	RIB	RUMP	EMA	RBV	IMF		
Acc	1.6		15	2.1	3.6	0.9	-1.5	0.8		
	70%		52%	51%	50%	48%	50%	47%		
\$INDEXES										
Dom. (\$)		Export (\$)		Live Export (\$)		\$PROFIT				
53		72		29		\$7,074				

This bull scanned through the roof with very high marbling. Again good fat cover and excellent free movement with docility.

LOT 24 PARINGA EXECUTIVE J83 L416 (P)

DOB: 14/09/2015 Society Id: TOLL416E Id: L0416 Sex: M Poll/Horn: PP Breed: CC100

VIOLET HILLS EXECUTIVE (P)
Sire: **ASHWOOD PARK EXECUTIVE J83E (P)**
ASHWOOD PARK ANGEL 1 (AI) (ET) (P)

VIOLET HILLS BARCLAY
VIOLET HILLS Y0011E
SS MONTANA SILVER
ASHWOOD PARK ANGEL

NWMSU DOC SILVER 362 PLD
Dam: **PARINGA DOC SILVER G285**
PARINGA BLUEGRASS D285 (AI) (ET) (P)

S \$ MONTANA SILVER
NWMSU DOLORES ET 0035
LT BLUEGRASS 4017P
FERNVALE ZHIRL Z62

JANUARY 2017 CHAROLAIS GROUP BREEDPLAN EBVs										
EBVs	CALVING EASE				GROWTH & MATERNAL					
	DIR	DTRS	GL	BWT	200	400	600	MWT	MILK	
Acc	14.3	9.9	-4.6	-2.7	6	17	19	11	11	
	42%	34%	46%	70%	61%	64%	61%	59%	43%	
EBVs	FERTILITY				CARCASS					
	SS	DC	CWT	RIB	RUMP	EMA	RBV	IMF		
Acc	2		14	0.4	0.8	0.8	-0.5	0.4		
	73%		53%	53%	52%	50%	53%	49%		
\$INDEXES										
Dom. (\$)		Export (\$)		Live Export (\$)		\$PROFIT				
53		70		23		\$6,443				

Good data is more telling and a truer picture of an animals worth than how they look (in our opinion!) It is easy to be tricked with fancy over fed bulls that take good photos with heaps of fat. We must evolve to trust the DATA! Good bull.

LOT 25 PARINGA EXECUTIVE J83 L419 (P)

DOB: 12/09/2015 Society Id: TOLL419E Id: L0419 Sex: M Poll/Horn: PP Breed: CC100

VIOLET HILLS EXECUTIVE (P)
Sire: ASHWOOD PARK EXECUTIVE J83E (P)
 ASHWOOD PARK ANGEL 1 (AI) (ET) (P)

VIOLET HILLS BARCLAY
 VIOLET HILLS Y0011E
 SS MONTANA SILVER
 ASHWOOD PARK ANGEL

NWMSU DOC SILVER 362 PLD
Dam: PARINGA DOC SILVER H334
 PARINGA BLUEGRASS D285 (AI) (ET) (P)

S \$ MONTANA SILVER
 NWMSU DOLORES ET 0035
 LT BLUEGRASS 4017P
 FERNVALE ZHIREL Z62



JANUARY 2017 CHAROLAIS GROUP BREEDPLAN EBVs										
CALVING EASE				GROWTH & MATERNAL						
EBVs	DIR	DTRS	GL	BWT	200	400	600	MWT	MILK	
Acc	42%	34%	45%	70%	61%	64%	61%	59%	42%	
FERTILITY				CARCASS						
EBVs	SS	DC	CWT	RIB	RUMP	EMA	RBV	IMF		
Acc	73%		53%	53%	52%	49%	53%	49%		
\$INDEXES	Dom. (\$)	Export (\$)	Live Export (\$)	\$PROFIT						
	52	71	28	\$7,818						

Docility and structure is the No. 1 aim, as long as its backed by good data that shows how animals rank and compare.



LOT 26 PARINGA LEDGER M342 (AI)(P)


DOB: 8/03/2016 Society Id: TOLM342E Id: M0342 Sex: M Poll/Horn: PH(95%) Breed: CC100

LT LEDGER 0332 (P)
Sire: **ASCOT LEDGER J26E (AI) (P)**
ASCOT JAJG0163 (AI) (ET) (P)

LT BLUEGRASS 4017P
LT BRENDA 6120 PLD
NWMSU DOC SILVER 362 PLD
ROSDALE BOBBIN Y074

WELCOME SWALLOW EASY GAIN F508 AI ET P
Dam: **PARINGA EASY GAIN J414**
PARINGA GRID MAKER D109 (AI) (ET) (P)

LT EASY PRO 1158 (P)
BJR SILVER MAID 717 ET (P)
M6 GRIDMAKER 104 PET
NF C34 COW F627 TW US (P)

JANUARY 2017 CHAROLAIS GROUP BREEDPLAN EBVs										
	CALVING EASE				GROWTH & MATERNAL					
	DIR	DTRS	GL	BWT	200	400	600	MWT	MILK	
	EBVs	12.8	1.5	-5.2	-2.2	14	32	41	22	13
Acc	38%	30%	55%	68%	52%	53%	52%	50%	35%	
	FERTILITY				CARCASS					
	SS	DC	CWT	RIB	RUMP	EMA	RBY	IMF		
	EBVs	1.9		23	1	1.7	2.3	-0.4	1.1	
Acc	47%		43%	44%	44%	38%	41%	38%		
\$INDEXES	Dom. (\$)	Export (\$)	Live Export (\$)			\$PROFIT				
	60	81	36			\$9,139				

A fabulous young bull with a predictable and stacked pedigree. His dam, an Easy Gain female, is, like all of our Easy Gains, one of our best herd performers – sound, beautiful udder, easy doing and easy going, and produce thumping calves. M342 is a handy bull. Top 1% on Domestic Index.

LOT 28 PARINGA LEDGER M348 (AI)(P)


DOB: 6/02/2016 Society Id: TOLM348E Id: M0348 Sex: M Poll/Horn: PP(98%) Breed: CC100

LT LEDGER 0332 (P)
Sire: **ASCOT LEDGER J26E (AI) (P)**
ASCOT JAJG0163 (AI) (ET) (P)

LT BLUEGRASS 4017P
LT BRENDA 6120 PLD
NWMSU DOC SILVER 362 PLD
ROSDALE BOBBIN Y074

LT LONG DISTANCE 9001 PLD
Dam: **PARINGA LONG DISTANCE K307**
PARINGA MAX H308

LT SILVER DISTANCE 5342
LT BELLE 7026
PARINGA MAX D101(AI) (S)
PARINGA WESTERN EDGE F213 (AI) (P)

JANUARY 2017 CHAROLAIS GROUP BREEDPLAN EBVs										
	CALVING EASE				GROWTH & MATERNAL					
	DIR	DTRS	GL	BWT	200	400	600	MWT	MILK	
EBVs	12.1	-1.1	-5.5	-2.9	11	23	33	4	14	
Acc	39%	30%	55%	68%	50%	50%	50%	48%	33%	
	FERTILITY				CARCASS					
	SS	DC	CWT	RIB	RUMP	EMA	RBY	IMF		
EBVs	2.6		18	1.6	2.5	1.7	-1.1	1		
Acc	46%		40%	40%	40%	35%	37%	35%		
\$INDEXES	Dom. (\$)		Export (\$)		Live Export (\$)		\$PROFIT			
	52		73		31		\$9,734			

M348 may be one of the highlights in this yearling group of Charolais. Beautiful bodied bull. I would say that our Long Distance daughters have produced possibly the best phenotype and genotype bulls in this sale line up. Great bodied bull.

LOT 29 PARINGA HOWLER M339 (P)


DOB: 26/02/2016 Society Id: TOLM339E Id: M0339 Sex: M Poll/Horn: PH(95%) Breed: CC100

BRANCH VIEW DYNAMO (P)
Sire: **BRANCH VIEW HOWLER (P)**
BRANCH VIEW A TOUCH OF CLASS E10 (P/S)

MOONGOOL YELLOW STONE (P)
BRANCH VIEW ULTIMATE Z19E
AMBERLEY CAIN (P)
BRANCH VIEW C113E

PARINGA RIO BRAVO D213E (AI) (P)
Dam: **PARINGA D213 H434**
PARINGA PERFORMER E207 (AI) (P)

LT RIO BRAVO 3181P
PARINGA CIGAR B064 AI ET
SILVERSTREAM PERFORMER P38EF
AIRLIE IONA A733E (P)

JANUARY 2017 CHAROLAIS GROUP BREEDPLAN EBVs										
 EBVs Acc	CALVING EASE				GROWTH & MATERNAL					
	DIR	DTRS	GL	BWT	200	400	600	MWT	MILK	
	5.3	-0.4	-1.4	1.1	14	26	35	32	4	
	35%	30%	45%	65%	50%	52%	50%	48%	35%	
EBVs Acc	FERTILITY				CARCASS					
	SS	DC	CWT	RIB	RUMP	EMA	RBY	IMF		
	0.6		17	0.9	1.7	1.9	-0.3	0.7		
	44%		43%	42%	42%	34%	39%	35%		
\$INDEXES	Dom. (\$)	Export (\$)	Live Export (\$)			\$PROFIT				
	33	45	25			\$6,185				

This mating has worked very well. Paringa Rio Bravo D213E is ranked #3 on calves born in 2015, and #5 on most calves for last 10 years. His females are game changers. Good bull.

Charolais Breed Average DIR 1.0 DTRS 0.7 GL -2.4 BW 0.5 200 12 400 23 600 31 MCW 33 MILK 7

LOT 27 PARINGA LEDGER M345 (AI)(P)


DOB: 26/02/2016 Society Id: TOLM345E Id: M0345 Sex: M Poll/Horn: PP(98%) Breed: CC100

LT LEDGER 0332 (P)
Sire: **ASCOT LEDGER J26E (AI) (P)**
ASCOT JAJG0163 (AI) (ET) (P)

LT BLUEGRASS 4017P
LT BRENDA 6120 PLD
NWMSU DOC SILVER 362 PLD
ROSDALE BOBBIN Y074

LCOC WHITE GOLD P002X
Dam: **PARINGA WHITE GOLD K313**
PARINGA THUNDERING WIND F216 (AI) (P)

NWMSU DOC SILVER 362 PLD
LCOC MS AMERICA UP045
LT THUNDERING WIND 5200P (US) (P)
PARINGA MONTANA B012 AI ET

JANUARY 2017 CHAROLAIS GROUP BREEDPLAN EBVs										
	CALVING EASE				GROWTH & MATERNAL					
	DIR	DTRS	GL	BWT	200	400	600	MWT	MILK	
	EBVs	11.1	1.4	-4.2	-1.2	19	38	48	34	11
Acc	40%	31%	55%	68%	51%	51%	51%	49%	36%	
EBVs	FERTILITY				CARCASS					
	SS	DC	CWT	RIB	RUMP	EMA	RBY	IMF		
	2.7		27	1.5	2.5	1.9	-1	1		
Acc	48%		42%	42%	41%	38%	39%	38%		
\$INDEXES										
	Dom. (\$)	Export (\$)	Live Export (\$)			\$PROFIT				
	61	84	37			\$8,872				

M345s dam is part of the elite donor female group that were selected over the past 3 years for breeding contract homozygous polled Charbray bulls for S Kidman & Co. M345 is a top Ascot Ledger J26, from a terrific young Free Lunch heifer. #1 ranked yearling Charolais bull in the sale for Domestic Index



LOT 30 PARINGA HOWLER M340 (P)


DOB: 5/03/2016 Society Id: TOLM340E Id: M0340 Sex: M Poll/Horn: PH(95%) Breed: CC100

BRANCH VIEW DYNAMO (P)
Sire: **BRANCH VIEW HOWLER (P)**
BRANCH VIEW A TOUCH OF CLASS E10 (P/S)

MOONGOOL YELLOW STONE (P)
BRANCH VIEW ULTIMATE Z19E
AMBERLEY CAIN (P)
BRANCH VIEW C113E

LCOC WHITE GOLD P002X
Dam: **PARINGA WHITE GOLD H385**
PARINGA COLORADO F353 (AI) (P)

NWMSU DOC SILVER 362 PLD
LCOC MS AMERICA UP045
SILVERSTREAM COLORADO C26
MOUNTVIEW LAZY GIRL 2 (AI) (P)

JANUARY 2017 CHAROLAIS GROUP BREEDPLAN EBVs										
 EBVs Acc	CALVING EASE				GROWTH & MATERNAL					
	DIR	DTRS	GL	BWT	200	400	600	MWT	MILK	
	5.7	2.9	-3.7	1	19	39	50	52	4	
	34%	27%	45%	65%	50%	51%	50%	47%	33%	
EBVs Acc	FERTILITY				CARCASS					
	SS	DC	CWT	RIB	RUMP	EMA	RBY	IMF		
	1.6		26	1	1.4	0.9	-0.6	0.4		
	44%		42%	41%	41%	33%	38%	34%		
\$INDEXES	Dom. (\$)	Export (\$)	Live Export (\$)			\$PROFIT				
	45	62	31			\$6,675				

Some real stretch and scope in these Howler sons. Again nice mating over these White Gold females. Excellent weaning and yearling performance to add some punch to your steers.

SS 1.0 CWT 19 RIB 0.2 RUMP 0.3 EMA 1.5 RBY 0.2 IMF 0.2 EXP \$30 NTI \$17 DOM \$22 \$P \$7671

YEARLING BULLS

LOT 31 PARINGA HOWLER M341 (P)

DOB: 4/03/2016 Society Id: TOLM341E Id: M0341 Sex: M Poll/Horn: ND Breed: CC100

BRANCH VIEW DYNAMO (P)
Sire: **BRANCH VIEW HOWLER (P)**
BRANCH VIEW A TOUCH OF CLASS E10 (P/S)

MOONGOOL YELLOW STONE (P)
BRANCH VIEW ULTIMATE Z19E
AMBERLEY CAIN (P)
BRANCH VIEW C113E

LT WESTERN EDGE 4057 PLD
Dam: **PARINGA WESTERN EDGE F248 (AI) (ET) (P)**
PARINGA COOLEY D174 AI ET

LT WESTERN SPUR 2061
LT DUCHESS OF MAC 7076
COOLEY S&W 9020P
PARINGA CIGAR Z1801



JANUARY 2017 CHAROLAIS GROUP BREEDPLAN EBVs									
	CALVING EASE				GROWTH & MATERNAL				
	DIR	DTRS	GL	BWT	200	400	600	MWT	MILK
EBVs	-2.2	1.5	-2.5	1.4	18	39	52	51	11
Acc	35%	29%	41%	65%	51%	52%	51%	51%	36%
	FERTILITY				CARCASS				
	SS	DC	CWT	RIB	RUMP	EMA	RBY	IMF	
EBVs	1.6		26	0.9	1.2	0.6	-0.5	0.3	
Acc	46%		43%	42%	42%	34%	38%	34%	
\$INDEXES									
	Dom. (\$)	Export (\$)	Live Export (\$)	\$PROFIT					
	32	43	25	\$6,220					

The biggest performance bull in the sale. Super quiet and great structure. Dam has been one of our highest grossing females. Her bulls are always crackers.

LOT 32 PARINGA HOWLER M344 (P)

DOB: 15/02/2016 Society Id: TOLM344E Id: M0344 Sex: M Poll/Horn: PP(98%) Breed: CC100

BRANCH VIEW DYNAMO (P)
Sire: **BRANCH VIEW HOWLER (P)**
BRANCH VIEW A TOUCH OF CLASS E10 (P/S)

MOONGOOL YELLOW STONE (P)
BRANCH VIEW ULTIMATE Z19E
AMBERLEY CAIN (P)
BRANCH VIEW C113E

HOMO POLLED

HARVIE REDEMPTION 36P MC286641 (P) (RF)
Dam: **PARINGA REDEMPTION G437**
PARINGA WESTER SPUR D195

LT WYOMING WIND 4020 PLD (P)
HARVIE MS MOLSON 53M (P)
LT WESTERN SPUR 2061
ROSDALE BOBBIN Y074

JANUARY 2017 CHAROLAIS GROUP BREEDPLAN EBVs									
	CALVING EASE				GROWTH & MATERNAL				
	DIR	DTRS	GL	BWT	200	400	600	MWT	MILK
EBVs	-0.7	-0.7	-2.1	1.5	16	34	44	40	3
Acc	36%	32%	45%	65%	51%	52%	51%	49%	37%
	FERTILITY				CARCASS				
	SS	DC	CWT	RIB	RUMP	EMA	RBY	IMF	
EBVs	1.9		24	1.8	2.6	1.2	-0.7	0.3	
Acc	45%		42%	42%	42%	34%	39%	34%	
\$INDEXES									
	Dom. (\$)	Export (\$)	Live Export (\$)	\$PROFIT					
	33	48	24	\$4,798					

A unique homozygous polled Howler son, from a super Redemption female.

LOT 34 PARINGA HOWLER M350 (P)

DOB: 11/02/2016 Society Id: TOLM350E Id: M0350 Sex: M Poll/Horn: PH(91%) Breed: CC100

BRANCH VIEW DYNAMO (P)
Sire: **BRANCH VIEW HOWLER (P)**
BRANCH VIEW A TOUCH OF CLASS E10 (P/S)

MOONGOOL YELLOW STONE (P)
BRANCH VIEW ULTIMATE Z19E
AMBERLEY CAIN (P)
BRANCH VIEW C113E

PARINGA RIO BRAVO D213E (AI) (P)
Dam: **PARINGA D213 G365**
PARINGA WESTERN EDGE E358 AI (P)

LT RIO BRAVO 3181P
PARINGA CIGAR B064 AI ET
LT WESTERN EDGE 4057 PLD
ROSDALE RUBY Y061

JANUARY 2017 CHAROLAIS GROUP BREEDPLAN EBVs									
	CALVING EASE				GROWTH & MATERNAL				
	DIR	DTRS	GL	BWT	200	400	600	MWT	MILK
EBVs	7.9	4.1	-2.8	-0.1	15	33	40	32	9
Acc	%	%	%	%	%	%	%	%	%
	FERTILITY				CARCASS				
	SS	DC	CWT	RIB	RUMP	EMA	RBY	IMF	
EBVs	1		22	1.4	2.3	1.4	-0.8	0.7	
Acc	%		%	%	%	%	%	%	
\$INDEXES									
	Dom. (\$)	Export (\$)	Live Export (\$)	\$PROFIT					
	50	65	30	\$8,150					

Dam is one of my favourites. Excellent bull with balanced data and power.

LOT 33 PARINGA HOWLER M346 (P)

DOB: 21/02/2016 Society Id: TOLM346E Id: M0346 Sex: M Poll/Horn: PH(95%) Breed: CC100

BRANCH VIEW DYNAMO (P)
Sire: **BRANCH VIEW HOWLER (P)**
BRANCH VIEW A TOUCH OF CLASS E10 (P/S)

MOONGOOL YELLOW STONE (P)
BRANCH VIEW ULTIMATE Z19E
AMBERLEY CAIN (P)
BRANCH VIEW C113E

PARINGA RIO BRAVO D213E (AI) (P)
Dam: **PARINGA D213 G361**
PARINGA RC CHARLIE E305 AI ET (P)

LT RIO BRAVO 3181P
PARINGA CIGAR B064 AI ET
RC CHARLIE 0327
MS COOLEY SMART CHOICE 1107P30

JANUARY 2017 CHAROLAIS GROUP BREEDPLAN EBVs									
	CALVING EASE				GROWTH & MATERNAL				
	DIR	DTRS	GL	BWT	200	400	600	MWT	MILK
EBVs	8.2	1	-3.3	0	15	36	44	35	8
Acc	34%	29%	45%	65%	50%	52%	50%	48%	35%
	FERTILITY				CARCASS				
	SS	DC	CWT	RIB	RUMP	EMA	RBY	IMF	
EBVs	1.1		24	2	3.3	1.9	-0.9	0.7	
Acc	45%		42%	42%	42%	32%	37%	35%	
\$INDEXES									
	Dom. (\$)	Export (\$)	Live Export (\$)	\$PROFIT					
	54	71	34	\$7,516					

Another Howler/D213 combination, nicely balanced bull with balanced data. Good fat cover and structure.



Charolais Breed Average DIR 1.0 DTRS 0.7 GL -2.4 BW 0.5 200 12 400 23 600 31 MCW 33 MILK 7 SS 1.0 CWT 19 RIB 0.2 RUMP 0.3 EMA 1.5 RBY 0.2 IMF 0.2 EXP \$30 NTI \$17 DOM \$22 \$P \$7671


LOT 35 PARINGA EXECUTIVE J83 M332 (P)
 DOB: 22/02/2016 Society Id: TOLM332E Id: M0332 Sex: M Poll/Horn: PP Breed: CC100

VIOLET HILLS EXECUTIVE (P)
Sire: ASHWOOD PARK EXECUTIVE J83E (P)
 ASHWOOD PARK ANGEL 1 (AI) (ET) (P)

VIOLET HILLS BARCLAY
 VIOLET HILLS Y0011E
 SS MONTANA SILVER
 ASHWOOD PARK ANGEL

WELCOME SWALLOW EASY GAIN F508 AI ET P
Dam: PARINGA EASY GAIN J365
 PARINGA RIO BRAVO D248

LT EASY PRO 1158 (P)
 BJR SILVER MAID 717 ET (P)
 LT RIO BRAVO 3181P
 AIRLIE REBECCA Z243E

JANUARY 2017 CHAROLAIS GROUP BREEDPLAN EBVs										
	CALVING EASE				GROWTH & MATERNAL					
	DIR	DTRS	GL	BWT	200	400	600	MWT	MILK	
	EBVs	9.7	5.8	-4.4	-1.7	13	31	37	31	11
Acc	38%	29%	43%	68%	52%	53%	52%	50%	35%	
	FERTILITY				CARCASS					
	SS	DC	CWT	RIB	RUMP	EMA	RBY	IMF		
	EBVs	0.7		24	1	1.7	1.1	-0.8	0.5	
Acc	47%		43%	43%	42%	36%	40%	36%		
\$INDEXES										
	Dom. (\$)	Export (\$)		Live Export (\$)		\$PROFIT				
	53	68		30		\$7,070				

When you compare the EBVs on the bull sale averages, they are better than the top 5% of the Charolais breed in almost every trait. And are in the top 5% for economic indexes. If you haven't visited us for a while to check out our bulls, these are well worth the look.


LOT 36 PARINGA EXECUTIVE J83 M333 (P)
 DOB: 21/03/2016 Society Id: TOLM333E Id: M0333 Sex: M Poll/Horn: PH(98%) Breed: CC100

VIOLET HILLS EXECUTIVE (P)
Sire: ASHWOOD PARK EXECUTIVE J83E (P)
 ASHWOOD PARK ANGEL 1 (AI) (ET) (P)

VIOLET HILLS BARCLAY
 VIOLET HILLS Y0011E
 SS MONTANA SILVER
 ASHWOOD PARK ANGEL

NWMSU DOC SILVER 362 PLD
Dam: PARINGA DOC SILVER G307
 PARINGA BLUEGRASS D297 (AI) (ET) (P)

S \$ MONTANA SILVER
 NWMSU DOLORES ET 0035
 LT BLUEGRASS 4017P
 FERNVALE ZHIRL Z62

JANUARY 2017 CHAROLAIS GROUP BREEDPLAN EBVs										
 EBVs Acc		CALVING EASE				GROWTH & MATERNAL				
		DIR	DTRS	GL	BWT	200	400	600	MWT	MILK
		8.2	1.5	-3.5	-0.7	12	29	34	41	9
		41%	33%	44%	67%	53%	55%	55%	55%	41%
		FERTILITY				CARCASS				
		SS	DC	CWT	RIB	RUMP	EMA	RBY	IMF	
EBVs		1.8		18	0.7	1.1	0.2	-0.9	0.3	
Acc		50%		46%	46%	45%	39%	43%	39%	
\$INDEXES										
		Dom. (\$)	Export (\$)	Live Export (\$)		\$PROFIT				
		42	56	25		\$7,398				

Wow, check out this bull. He is the stand out yearling in the sale on his individual performance. Incredible weight for age in a free moving package. You will fall in love with these Executives, with their stand out good looks, and soft loose skin.


LOT 37 PARINGA EXECUTIVE J83 M334 (P)
 DOB: 26/02/2016 Society Id: TOLM334E Id: M0334 Sex: M Poll/Horn: PP Breed: CC100

VIOLET HILLS EXECUTIVE (P)
Sire: ASHWOOD PARK EXECUTIVE J83E (P)
 ASHWOOD PARK ANGEL 1 (AI) (ET) (P)

VIOLET HILLS BARCLAY
 VIOLET HILLS Y0011E
 SS MONTANA SILVER
 ASHWOOD PARK ANGEL

WELCOME SWALLOW EASY GAIN F508 AI ET P
Dam: PARINGA EASY GAIN J368
 PARINGA WESTERN EDGE E338 AI (P)

LT EASY PRO 1158 (P)
 BJR SILVER MAID 717 ET (P)
 LT WESTERN EDGE 4057 PLD
 AIRLIE REBECCA Z243E

JANUARY 2017 CHAROLAIS GROUP BREEDPLAN EBVS										
 EBVs Acc	CALVING EASE				GROWTH & MATERNAL					
	DIR	DTRS	GL	BWT	200	400	600	MWT	MILK	
	7.4	8	-4.8	-1	14	35	42	40	13	
	38%	29%	48%	68%	52%	53%	53%	51%	35%	
EBVs Acc	FERTILITY				CARCASS					
	SS	DC	CWT	RIB	RUMP	EMA	RBY	IMF		
	1.1		24	0.3	0.4	0.1	-0.6	0.1		
	47%		43%	43%	43%	37%	41%	36%		
\$INDEXES										
	Dom. (\$)		Export (\$)		Live Export (\$)		\$PROFIT			
	48		62		27		\$6,944			

A thicker set young bull with tremendous carcass. These Easy Gain females always get the job done. Outstanding bull.



YEARLING BULLS

LOT 38 PARINGA EXECUTIVE J83 M335 (P)

DOB: 24/02/2016 Society Id: TOLM335E Id: M0335 Sex: M Poll/Horn: PP(98%) Breed: CC100

VIOLET HILLS EXECUTIVE (P)
Sire: **ASHWOOD PARK EXECUTIVE J83E (P)**
ASHWOOD PARK ANGEL 1 (AI) (ET) (P)

VIOLET HILLS BARCLAY
VIOLET HILLS Y0011E
SS MONTANA SILVER
ASHWOOD PARK ANGEL



HCR SUCCESS 6073 PLD
Dam: **PARINGA SUCCESS G286**
PARINGA BLUEGRASS C141 AI (P)

SCHURRTOP HCR RANCHER 1304
MISS HCR PRIME 3124
LT BLUEGRASS 4017P
COBRABALD VOLT X187



JANUARY 2017 CHAROLAIS GROUP BREEDPLAN EBVs										
CALVING EASE					GROWTH & MATERNAL					
EBVs	DIR	DTRS	GL	BWT	200	400	600	MWT	MILK	
Acc	2.6	6.3	-4	-0.7	9	20	25	22	8	
	39%	30%	44%	67%	52%	54%	54%	54%	38%	
FERTILITY					CARCASS					
EBVs	SS	DC	CWT	RIB	RUMP	EMA	RBY	IMF		
Acc	2.2		13	0.9	1.5	-0.3	-1.1	0.2		
	50%		45%	44%	44%	38%	42%	39%		
\$INDEXES	Dom. (\$)	Export (\$)	Live Export (\$)	\$PROFIT						
	31	43	16	\$6,099						

Interesting pedigree; success did well in the progeny test cohort. This bull really grabs me, and his homo polled status adds a nice bonus.

LOT 39 PARINGA EXECUTIVE J83 M336 (P)

DOB: 11/03/2016 Society Id: TOLM336E Id: M0336 Sex: M Poll/Horn: ND Breed: CC100

VIOLET HILLS EXECUTIVE (P)
Sire: **ASHWOOD PARK EXECUTIVE J83E (P)**
ASHWOOD PARK ANGEL 1 (AI) (ET) (P)

VIOLET HILLS BARCLAY
VIOLET HILLS Y0011E
SS MONTANA SILVER
ASHWOOD PARK ANGEL



NWMSU DOC SILVER 362 PLD
Dam: **PARINGA DOC SILVER G321**
PARINGA PINAY D231E (AI) (P)

S \$ MONTANA SILVER
NWMSU DOLORES ET 0035
PINAY
ROSEDALE REBECCA Y7 (P)



JANUARY 2017 CHAROLAIS GROUP BREEDPLAN EBVs										
CALVING EASE					GROWTH & MATERNAL					
EBVs	DIR	DTRS	GL	BWT	200	400	600	MWT	MILK	
Acc	12.6	7.2	-5.3	-0.9	14	35	45	46	14	
	41%	34%	46%	69%	54%	55%	55%	55%	41%	
FERTILITY					CARCASS					
EBVs	SS	DC	CWT	RIB	RUMP	EMA	RBY	IMF		
Acc	1.6		27	0.4	0.6	1.5	-0.1	0.3		
	50%		46%	45%	45%	39%	43%	39%		
\$INDEXES	Dom. (\$)	Export (\$)	Live Export (\$)	\$PROFIT						
	58	77	34	\$7,062						

You can see why this magnificent bull is the highest indexing Executive J83 son in the sale. I would expect his data to further improve once the sale day data is submitted. He will be pushing nearly 600kgs at 12 months and still carrying himself like a fine athlete. Exceptional calving ease with phenomenal growth and carcass.

LOT 40 PARINGA EXECUTIVE J83 M337 (P)

DOB: 21/03/2016 Society Id: TOLM337E Id: M0337 Sex: M Poll/Horn: PH(98%) Breed: CC100

VIOLET HILLS EXECUTIVE (P)
Sire: **ASHWOOD PARK EXECUTIVE J83E (P)**
ASHWOOD PARK ANGEL 1 (AI) (ET) (P)

VIOLET HILLS BARCLAY
VIOLET HILLS Y0011E
SS MONTANA SILVER
ASHWOOD PARK ANGEL

NWMSU DOC SILVER 362 PLD
Dam: **PARINGA DOC SILVER G307**
PARINGA BLUEGRASS D297 (AI) (ET) (P)

S \$ MONTANA SILVER
NWMSU DOLORES ET 0035
LT BLUEGRASS 4017P
FERNVALE ZHRL 262

JANUARY 2017 CHAROLAIS GROUP BREEDPLAN EBVs										
CALVING EASE					GROWTH & MATERNAL					
EBVs	DIR	DTRS	GL	BWT	200	400	600	MWT	MILK	
Acc	6.5	0.9	-3.3	-0.2	13	30	36	45	8	
	41%	33%	44%	67%	53%	55%	55%	55%	41%	
FERTILITY					CARCASS					
EBVs	SS	DC	CWT	RIB	RUMP	EMA	RBY	IMF		
Acc	1.8		19	0.7	1.1	0.2	-0.8	0.3		
	50%		46%	46%	45%	39%	43%	39%		
\$INDEXES	Dom. (\$)	Export (\$)	Live Export (\$)	\$PROFIT						
	39	53	24	\$7,218						

These Executive J83 sons are uniform in type. He stamps his mark on these bulls. Doc Silver females are sensational. M337 is a handy bull.

"Check out the Paringa Charolais rankings within the breed:

1. Easy Calving **Top 10%**
2. Yearling Weight 400D **Top 5%**
3. High Carcass Weight **Top 35%**
4. Easy fleshing - **Top 5% Fats**
5. Total predictable performance **Top 5%**"



Australia's First \$Profit Index

This year has been a first in the Australian Beef Industry, and has been a long held ambition of the team behind Paringa Livestock Genetics - to get a breeding value prediction that can be compared across ALL breeds.

The unique \$Profit breeding value ranking system, not only compares all breeds equally, but compares hybrid composite multi breed animals as well.

What makes this \$Profit selection even more unique is, in addition to the standard traits such as birth, weaning weights and carcass assessments which are revenue traits, it also looks at feed efficiency and cow maintenance; which can impact costs significantly. The biggest improvement is its balance; it recognises the benefits of hybrid vigour in a breeding system, and does not assume "more is better". Traits are not linear, and realising this and that more is not better is an important component of this index.

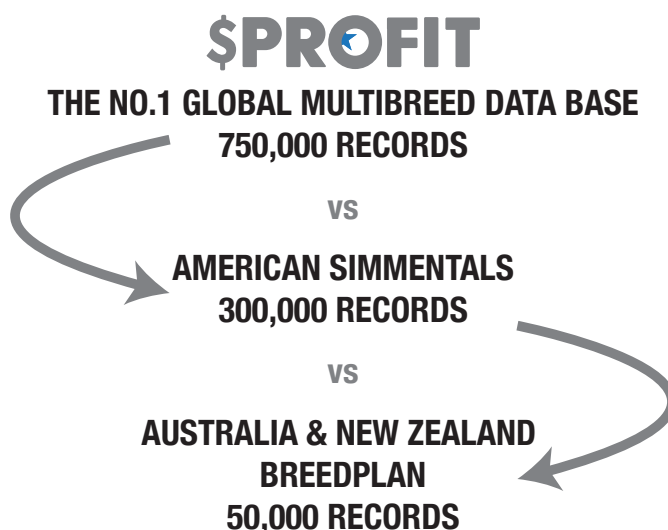
We will continue to work with ABRI for Breedplan Analysis EBVs on the pure bred registered animals, and now can also offer an additional selection tool, \$Profit Index.

Internally in the Paringa breeding program, we have been observing the impact \$Profit Index has had in the USA over a number of years; then carefully selected AI sires to use within our herd here in Australia. \$Profit sires have worked extremely well over our herd, while customers using Paringa bred sons have achieved similar results in the progeny.

To deliver positive outcomes to livestock producers, and in particular being able to offer our customers the best available global genetics, providing a \$Profit Index is the perfect tool. By linking our herd in, and comparing them to the 740,000 plus animals currently on the system, buyers can be confident we are comparing apples with apples.

Buying quality yearling bulls can be the most rapid genetic gain achievable. Effectively, the bulls are purchased at an age that their progeny are sold, so this gives a simple picture of what they will breed.

Visiting commercial producers in recent times, using yearling bulls in their herds, the genetic gain was obvious – these bulls bought a year ago as yearlings, now a two year old, had amazing calves on the ground. The neighbour, who purchased a 2 year old bull same time last year, is essentially a year behind in genetic progress. It is easy to see why the 2 year olds are attractive; they are grown out and always look impressive. But remember good genetics compound quickly. Why wait? Undeniably the numbers stack up.



Explanation For Across Breed Ebvs (ABE)

Across Breed EBVs are published for all the Stabilizer® bulls in this catalogue. These Across Breed EBVs predict differences expected in performance of future progeny of these bulls. All the Across Breed EBVs can be used to compare the Stabilizers® within this catalogue.

Birth Weight (BW) ABE – is the weight of progeny at birth, expressed in kg.

Weaning Weight (WW) ABE – is the weight of progeny at weaning, expressed in kg.

Yearling Weight (YW) ABE – is the weight of progeny at yearling age (12 months of age) expressed in kg.

Milk (MK) ABE – This is the best indicator of a bull's daughter ability to milk. It measures the difference in weaning weight between bulls' progeny solely due to milk.

Scrotal (SC) ABE – is calculated from the circumference of the bulls' scrotum.

Back Fat (BF) ABE – is the ultrasound based ABE for back fat in mm.

Rib Eye (RE) ABE – is the ultrasound based ABE for rib eye area, expressed in cm squared.

Marbling (MB) ABE – is the ultrasound based ABE for marbling.

Carcass Weight (CW) ABE – is the expected progeny differences in bulls progeny for carcass weight, expressed in kgs.

Mature Weight (MW) ABE – is the predicted mature weight of daughters. This ABE is the best indicator of daughter size.

Intake (IN) ABE – Is an estimate of the amount of feed that the bull's progeny will consume over a 112 day feeding period. Animals with lower IN ABE figures will consume less throughout their life.

Feeder Gain (FG) ABE – predicts the feedlot efficiency of the bulls' offspring. Bulls with lower FG ABE figures will produce progeny that feed more efficiently.





Tom, with Lee Leachman visit to Yea 2010.

Why \$Profit Helps

With over 20 traits and so many measurements, buying the best bull has become really confusing. Every bull is good on some traits and weak on others. The challenge is figuring out how each of those traits is going to impact your bottom line. This is where \$Profit value comes in.

How \$Profit Works

\$Profit assumes that the average commercial bull will have 100 progeny over its lifetime. The model assumes you will keep 30% of your heifers as replacements and that you retain ownership on the remainder of calves through finishing and sale.

The model then factors in all of the effects on both income and expense to come up with a net profit figure for each bull. \$Profit allows you to compare any two bulls and calculate the difference in profit that they are expected to generate in your herd.

Leachman Cattle, Colorado



What traits are included in \$Profit?

\$Profit includes nearly every trait that impacts profitability. The effect of most traits on profit is fairly simple to understand. Here is a list of what is included and its effect:

Revenue Traits

Calving ease = more calves
Weaning & yearling EBV = more weight
Fertility (days to conception) = more weight and more calves
Carcass weight = worth more
Marbling = value based premiums
Eye muscle area = more yield is more meat

Cost Traits

Cow mature size = bigger eats more
Cow intake = more intake costs more
Feedlot feed efficiency = cost of gain
Some traits are not so easily characterised for \$Profit. Milk, for example, is a good thing until you get too much. When over +25, milk has a more negative effect on fertility that it has a positive effect on weaning weight.

Why We Joined The \$Profit Database

- Essentially we needed an index that did the following:
- Reflects the true benefits of cross breeding systems; and Heterosis. The Pork and Poultry industries have used similar indexes for years.
- It is one index that genuinely reflects the best cattle, looking at all cost and revenue traits
- Includes feed efficiency data and fertility inputs
- Is focussed on the end product and profitability, without sacrificing livestock producer business
- Helps bull buyers make better breeding decisions, simplifies all the important data into one easy to identify index
- Database is managed and operated by professional cattle breeders, not by a board of directors
- More is not always better

\$Profit has been commercially tested and verified in the USA for 10 years, we have used \$Profit bulls for 5 years, and the results are conclusive. "It consistently highlights the best cattle".

Tom Aug 16

"Optimal is always best in nature"





BLACK STABILIZER®

REFERENCE SIRES

DAVELLE BAROSSA J5

Birth Date: 16/03/2013 Ident: DVPJ5 Reg: Polled Colour: Black Breed: SD

MBJ ROMEO 125R
Sire: **BC PROGRESS 315U**
MBJ SASSY 6714S

CIMARRON CASSANOVA 354N
MBJ NIKKI 3675N
DLCC SURE-ENUF 94M
BC LAVINA 1763L

PALTARRA WINNER
Dam: **DAVELLE WIN INA A28**
DAVELLE T21 IRIS

PALTARRA UBQUIET
PALTARRA TOFFEE
GUM HILLT21
PALTARRA VERITY

SOUTH DEVON GROUP BREEDPLAN (2016)									
	CALVING EASE				GROWTH & MATERNAL				
	DIR	DTRS	GL	BWT	200	400	600	MWT	MILK
EBVs	-	-	-2.6	-0.7	22	33	34	28	4
Acc	-	-	63	80	80	79	76	65	52
	FERTILITY				CARCASS				
	SS	DC	CWT	EMA	RIB	RUMP	RYB	IMF	
EBVs	1.1	-	31	0.3	1.3	1.6	-1.1	1.6	
Acc	72	-	67	50	63	63	60	54	
\$INDEXES	EMI	SI	VI						
	64	55	39						



Barossa, son of BC Progress was selected to be part of our Stabilizer® breeding program, and we are excited about introducing this first draft of Barossa sons in the sale. He is a super quiet bull, feed efficient, massive carcass weight, and very high meat quality.

EC Progress, sire of Barossa, is the highest \$Profit option to add South Devon to the composite genepool. Our continued commitment to those of you that use our Stabilizer® program is to find and test bulls from the most compatible and valuable breeds. Along with that we require that every component breed is represented by sires that can compete with, and add to the value of existing cattle in our gene pool. Progress not only meets our criteria, but posts one of the highest \$Profit values, ranking in the top 1% for feed/gain and 2% for intake. This purebred South Devon sire excels in any breeding scenario from purebred seed stock application to developing a unique composite gene pool.

PARINGA ABSOLUTELY J87

AMFU CAF NHFU DDFU

Birth Date: 10/08/2013 Society Id: HKFJ87 REG: HBR Breed: AA

S A V FINAL ANSWER 0035
Sire: **K C F BENNETT ABSOLUTE**
THOMAS MISS LUCY 5152

SITZ TRAVELLER 8180
S A V EMULOUS 8145
WULFFS EXT 6106
THOMAS MISS LUCY 3050

MESSMER PACKER S008 (RED)
Dam: **PARINGA RED PACKER F406 (AI)**
PARINGA RED VICEROY D43

MESSMER JOSHUA 019P
MESSMER MILLIE 124P
TEMANIA VICEROY Z1032 RED AI ET
STRATHEWEN XPO MITTAGONG A0036 RED AI

January 2017 Angus Australia EBVs									
	CALVING EASE				GROWTH & MATERNAL				
	DIR	DTRS	GL	BWT	200	400	600	MWT	MILK
EBVs	4.3	2.1	-11	2	49	86	101	80	10
Acc	65	53	94	90	86	86	82	76	61
	FERTILITY				CARCASS				
	SS	DC	CWT	RIB	RUMP	EMA	RYB	IMF	
EBVs	2.8	-3.9	66	1.2	-0.9	7.6	1.3	1.8	
Acc	75	35	71	69	68	67	62	65	
\$INDEXES	DOM	GRN	GRS	ABI					
	123	121	118	119					



Paringa Absolutely J87, pictured as a yearling.

J87 was selected as stud sire for his predicted short and early gestation, and almost complete outcross Angus genetics, that carries the genetic lineage for very high feed efficiency with strong maternal traits. Paringa Absolutely J87 himself is very high on these traits, and his progeny also, particularly EMA and Marbling scan results.

J87 has worked well over the modern Angus lines, and also completed our black Stabilizer® females. Absolutely will let you sleep easy during calving, and put extra \$\$ into your pocket.



2017 AUTUMN SALE

BLACK STABILIZER® SALE LOTS

YEARLING BULLS

LOT 41 PARINGA BLACK STABILIZER M4

Birth Date: 11/02/2016 Ident: M0004 Breed Comp: AA75SI13SE6CC6

K C F BENNETT ABSOLUTE
Sire: PARINGA ABSOLUTELY J87
PARINGA RED PACKER F406 (AI)

S A V FINAL ANSWER 0035
THOMAS MISS LUCY 5152
MESSMER PACKER S008 (RED)
PARINGA RED VICEROY D43

TNT DUAL FOCUS T249(MBR)
Dam: PARINGA BLACK STABILIZER K600
PARINGA ADA F500

MYTTY IN FOCUS
TNT MISS R77(MBR)
TE MANIA ADA A149 (TC)
PARINGA MONTANA SC D512

ACROSS BREED EBV'S (2017)						
BW	WW	YW	MK	SC	BF	\$PROFIT
-0.6	35	66	13	0.70	0.012	\$8,744
REA	IMF	CW	IN	FG	MW	
0.47	0.46	795	14	-0.18	-8	

M4 has always been a star in his contemporary. These bulls are a select group of top of the drop Autumn Stabilizer® and Angus. K600, dam of M4, is a magnificent female, with good breed combination, super quiet, scale and high fertility. These powerful Dual Focus females have worked well with Paringa Absolutely J87.



LOT 42 PARINGA BLACK STABILIZER M8

Birth Date: 11/02/2016 Ident: M0008 Breed Comp: AA70SI28PS1

K C F BENNETT ABSOLUTE
Sire: PARINGA ABSOLUTELY J87
PARINGA RED PACKER F406 (AI)

S A V FINAL ANSWER 0035
THOMAS MISS LUCY 5152
MESSMER PACKER S008 (RED)
PARINGA RED VICEROY D43

TNT DUAL FOCUS T249(MBR)
Dam: PARINGA BLACK STABILIZER K607
LANCASTER F380 (P)

MYTTY IN FOCUS
TNT MISS R77(MBR)
LANCASTER CORVETTE
LANCASTER C163

ACROSS BREED EBV'S (2017)						
BW	WW	YW	MK	SC	BF	\$PROFIT
3.3	54	88	23	0.82	0.007	\$10,368
REA	IMF	CW	IN	FG	MW	
0.49	0.40	818	18	-0.23	43	

M8 has a very similar pedigree to previous lot and possibly one of the most impressive bulls in the sale. M8 is a very quiet slick coated bull from a fabulous Dual Focus female. This bull has a higher Angus content with very easy calving potential.



	BW	WW	YW	MK	SC	BF	REA	IMF	CW	IN	FG	MW	\$PROFIT
Paringa Stabilizer Sale Group ABE Avg.	0.2	43	75	20	0.44	0.000	0.44	0.39	816	14	-0.12	7	\$10,093
LC ABE Breed Avg. (2017)	2.1	38	63	16	0.44	-0.016	0.43	0.11	-	36	0.05	18	\$5,440

LOT 43 PARINGA BLACK STABILIZER M65

Birth Date: 1/03/2016 Ident: M0065 Breed Comp: AA50SD50

BC PROGRESS 315U
Sire: DAVELLE BAROSSA J5
 DAVELLE WIN INA A28

MJB ROMEO 125R
 MJB SASSY 6714S
 PALTARRA WINNER
 DAVELLE T21 IRIS

TUWHARETOA REGENT D145(AI)(ET)
Dam: LAWSONS REGENT J24
 LAWSONS NEW DESIGN 5050 E1134

TE MANIA AMBASSADOR A134(AI)
 LAWSONS HENRY VIII Y5(AI)
 GAR NEW DESIGN 5050
 LAWSONS ROMEO C989

ACROSS BREED EBV'S (2017)						
BW	WW	YW	MK	SC	BF	\$PROFIT
-1.0	41	73	23	0.20	-0.007	\$11,629
REA	IMF	CW	IN	FG	MW	
0.44	0.38	825	11	-0.07	-5	



It is exciting to present the first of Barossa J5 bulls to sell in Australia. Please read the notes in the reference sire section of the catalogue about how these came about and in particular how well his sire BC Progress has done.

The Barossa bulls are well worth a look. They are very docile and super sound cattle, and will add an exciting mix to existing composite herds.

LOT 44 PARINGA BLACK STABILIZER M66

Birth Date: 2/03/2016 Ident: M0066 Breed Comp: AA50SD50

BC PROGRESS 315U
Sire: DAVELLE BAROSSA J5
 DAVELLE WIN INA A28

MJB ROMEO 125R
 MJB SASSY 6714S
 PALTARRA WINNER
 DAVELLE T21 IRIS

DUNOON EVIDENT E614 (ET) (AI)
Dam: LAWSONS EVIDENT J26
 LAWSONS IRONSTONE E220

TE MANIA BARTEL B219
 DUNOON ELSA B681
 LAWSONS IRONSTONE B1370
 LAWSONS SOLUTION B1751

ACROSS BREED EBV'S (2017)						
BW	WW	YW	MK	SC	BF	\$PROFIT
-1.9	46	79	26	0.34	-0.006	\$12,937
REA	IMF	CW	IN	FG	MW	
0.50	0.35	829	17	-0.07	-11	



All these Barossa sons are stylish, clean coated and loaded with carcase weight; beautiful fine textured, and high marbling meat. They will boost Heterosis, plus kg/ha of live weight gain, improve feed efficiency and meat quality in one hit.

LOT 45 PARINGA BLACK STABILIZER M67

Birth Date: 27/02/2016 Ident: M0067 Breed Comp: AA50SD50

BC PROGRESS 315U
Sire: DAVELLE BAROSSA J5
 DAVELLE WIN INA A28

MJB ROMEO 125R
 MJB SASSY 6714S
 PALTARRA WINNER
 DAVELLE T21 IRIS

TUWHARETOA REGENT D145(AI)(ET)
Dam: LAWSONS REGENT J33
 LAWSONS ULTIMATE E1124

TE MANIA AMBASSADOR A134(AI)
 LAWSONS HENRY VIII Y5(AI)
 GAR ULTIMATE
 LAWSONS FAIR DINKUM C153

ACROSS BREED EBV'S (2017)						
BW	WW	YW	MK	SC	BF	\$PROFIT
-0.6	39	70	22	0.20	-0.007	\$10,946
REA	IMF	CW	IN	FG	MW	
0.44	0.38	822	11	-0.07	-5	



It is exciting to present the first of Barossa J5 bulls to sell in Australia. Please read the notes in the reference sire section of the catalogue about how these came about and in particular how well his sire BC Progress has done.

The Barossa bulls are well worth a look. They are very docile and super sound cattle, and will add an exciting mix to existing composite herds.

	BW	WW	YW	MK	SC	BF	REA	IMF	CW	IN	FG	MW	\$PROFIT
Paringa Stabilizer Sale Group ABE Avg.	0.2	43	75	20	0.44	0.000	0.44	0.39	816	14	-0.12	7	\$10,093
LC ABE Breed Avg. (2017)	2.1	38	63	16	0.44	-0.016	0.43	0.11	-	36	0.05	18	\$5,440

YEARLING BULLS

LOT 46 PARINGA BLACK STABILIZER M7

Birth Date: 5/02/2016 BREED: AA76SS24

COOTA PARK BLUE-E E109

Sire: **COOTA PARK G214**

COOTA PARK D2

COOTA PARK C63

COOTA PARK V295

COOTA PARK A107

COOTA PARK B202

TE MANIA BERKLEY B1(AI)

Dam: **KENNY'S CREEK BARA H15(AI)**

KENNY'S CREEK BARA F84 (AI) (ET)

TE MANIA YORKSHIRE Y437

TE MANIA LOWAN Z53

MYTTY IN FOCUS

KENNY'S CREEK BARA B265

ACROSS BREED EBV'S (2017)						
BW	WW	YW	MK	SC	BF	\$PROFIT
2.2	43	72	14	0.40	0.002	\$5,936
REA	IMF	CW	IN	FG	MW	
0.30	0.36	806	-	-	30	

	BW	WW	YW	MK	SC	BF	REA	IMF	CW	IN	FG	MW	\$PROFIT
Paringa Stabilizer Sale Group ABE Avg.	0.2	43	75	20	0.44	0.000	0.44	0.39	816	14	-0.12	7	\$10,093
LC ABE Breed Avg. (2017)	2.1	38	63	16	0.44	-0.016	0.43	0.11	-	36	0.05	18	\$5,440





BLACK ANGUS

REFERENCE SIRES

PARINGA ABSOLUTELY J87

AMFU CAF NHFU DDFU

Birth Date: 10/08/2013

Society Id: HKFJ87

REG: HBR

Breed: AA

S A V FINAL ANSWER 0035
Sire: **K C F BENNETT ABSOLUTE**
THOMAS MISS LUCY 5152

SITZ TRAVELLER 8180
S A V EMULOUS 8145
WULFFS EXT 6106
THOMAS MISS LUCY 3050

MESSMER PACKER S008 (RED)
Dam: **PARINGA RED PACKER F406 (AI)**
PARINGA RED VICEROY D43

MESSMER JOSHUA 019P
MESSMER MILLIE 124P
TEMANIA VICEROY Z1032 RED AI ET
STRATHEWEN XPO MITTAGONG A0036 RED AI

January 2017 Angus Australia EBVs									
	CALVING EASE				GROWTH & MATERNAL				
	DIR	DTRS	GL	BWT	200	400	600	MWT	MILK
EBVs	4.3	2.1	-11	2	49	86	101	80	10
Acc	65	53	94	90	86	86	82	76	61
	FERTILITY				CARCASS				
	SS	DC	CWT	RIB	RUMP	EMA	RBY	IMF	
EBVs	2.8	-3.9	66	1.2	-0.9	7.6	1.3	1.8	
Acc	75	35	71	69	68	67	62	65	
\$INDEXES	DOM		GRN		GRS		ABI		
	123		121		118		119		



Paringa Absolutely J87, pictured as a yearling.

J87 was selected as stud sire for his predicted short and early gestation, and almost complete outcross Angus genetics, that carries the genetic lineage for very high feed efficiency with strong maternal traits. Paringa Absolutely J87 himself is very high on these traits, and his progeny also, particularly EMA and Marbling scan results.

J87 has worked well over the modern Angus lines, and also completed our black Stabilizer® females. Absolutely will let you sleep easy during calving, and put extra \$\$ into your pocket.



KCF Bennett Absolute

PARINGA JUDD J5

AMF CAF NHF DDF

Birth Date: 14/02/2013

Society Id: HKFJ5

REG: HBR

Breed: AA

TE MANIA AMBASSADOR A134(AI)
Sire: **TUWHARETOA REGENT D145(AI)(ET)**
LAWSON'S HENRY VIII Y5(AI)

RENNYLEA XPONENTIAL X555
TE MANIA LOWAN Y211
YTHANBRAE HENRY VIII U8(AI)(ET)
YTHANBRAE DIRECTION T270

TE MANIA BERKLEY B1(AI)
Dam: **STRATHEWEN BERKLEY WILPENA F30**
STRATHEWEN IN FOCUS WILPENA B41

TE MANIA YORKSHIRE Y437
TE MANIA LOWAN Z53
MYTTY IN FOCUS
STRATHEWEN NEW DIMENSION WILPENA Z18



January 2017 Angus Australia EBVs									
EBVs	CALVING EASE				GROWTH & MATERNAL				
	DIR	DTRS	GL	BWT	200	400	600	MWT	MILK
Acc	75	60	98	98	95	95	90	83	71
EBVs	FERTILITY				CARCASS				
	SS	DC	CWT	RIB	RUMP	EMA	RBV	IMF	
Acc	90	58	79	81	80	79	75	77	
\$INDEXES									
DOM		GRN		GRS		ABI			
124		186		142		158			

Judd J5 has gone from strength to strength as more data is submitted. He currently ranks as the best balanced proven Regent son on the market. Judd was our highest price yearling bull ever sold, at \$36,000.

A unique combination of high growth, with one of the lowest mature cow sizes, Judd ranks in the top 20 Bulls of the whole Angus data base. Massive carcass weights and i50k results suggest high feed efficiency. Judd is the highest fat bull in a group of proven top 20 indexing bulls. He is spectacular on daughter fertility with carcass traits that are hard to find. Customer satisfaction is very high and people love his soft, easy doing, stylish packages. And with his latest data stats just in, it's easy to see why.

Judd is now ranked in the top 1% on eight traits.

It is with great sadness we advise that he recently passed away. We are proud of his performance and impact on the Angus breed in his short life.



PARINGA BARTEL H130

AMFU CAF NHFU DDFU

Birth Date: 4/08/2012

Society Id: HKFH130

REG: HBR

Breed: AA

TE MANIA BARTEL B219
Sire: **AYRVALE BARTEL E7**
EAGLEHAWK JEDDA B32

B/R NEW DIMENSION 7127
TE MANIA JEDDA W85
MYTTY IN FOCUS
EAGLEHAWK JEDDA Z48

MESSMER PACKER S008 (RED)
Dam: **PARINGA RED PACKER F406 (AI)**
PARINGA RED VICEROY D43

MESSMER JOSHUA 019P
MESSMER MILLIE 124P
TEMANIA VICEROY Z1032 RED AI ET
STRATHEWEN XPO MITTAGONG A0036 RED AI



January 2017 Angus Australia EBVs									
EBVs	CALVING EASE				GROWTH & MATERNAL				
	DIR	DTRS	GL	BWT	200	400	600	MWT	MILK
Acc	62	51	86	85	81	82	78	73	61
EBVs	FERTILITY				CARCASS				
	SS	DC	CWT	RIB	RUMP	EMA	RBV	IMF	
Acc	80	43	70	71	70	68	66	66	
\$INDEXES									
DOM		GRN		GRS		ABI			
118		131		118		123			

Proven MSA project sire - ranked #1 for recent progeny test. Impressive calving ease bull, with added daughter calving ease. Bartel is one of the highest ranked bulls for days to calving - extreme fertility. With almost 4000 registered progeny he will go down as one of the greatest. Bartel sons feature again in our sale with wide commercial appeal. Pictured above legend sire Ayrvale Bartel E7. The dam of this natural mating sire H130 is also Absolutely J87's dam.



2017 AUTUMN SALE

BLACK ANGUS SALE LOTS

YEARLING BULLS

LOT 47 PARINGA MASSIVE M9

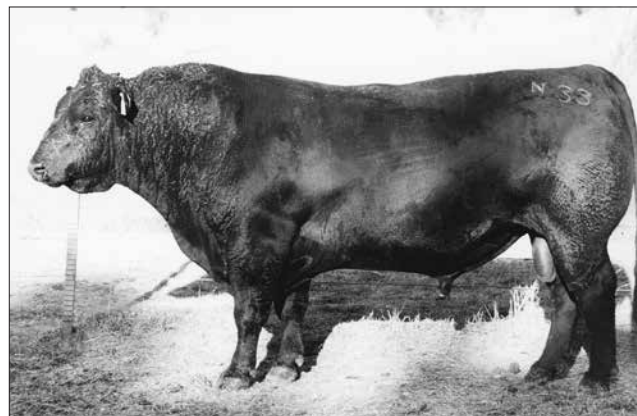
Birth Date: 10/02/2016 Ident: M0009 Society Id: HKFM9 Sex: M ASA: HBR

K C F BENNETT ABSOLUTE
Sire: PARINGA ABSOLUTELY J87
PARINGA RED PACKER F406 (AI)

S A V FINAL ANSWER 0035
THOMAS MISS LUCY 5152
MESSMER PACKER S008 (RED)
PARINGA RED VICEROY D43

TOPBOS AMBASSADOR F4
Dam: LAWSONS AMBASSADOR J989(AI)
LAWSONS NEW DESIGN 1407 Z1492

TUWHARETOA REGENT D145(AI)(ET)
TUWHARETOA C115
BON VIEW NEW DESIGN 1407
LAWSONS PINNACLE X1331



Ythanbrae Tru Blue N33

2017 AUSTRALIAN ANGUS GROUP BREEDPLAN EBVs									
EBVs	CALVING EASE				GROWTH & MATERNAL				
	DIR	DTRS	GL	BWT	200	400	600	MWT	MILK
Acc	1.8	0.4	-5.2	3.6	44	78	102	91	14
EBVs	FERTILITY				CARCASS				
	SS	DC	CWT	RIB	RUMP	EMA	RBV	IMF	
Acc	1.4	-4.0	56	-0.4	-1.0	5.8	0.8	1.7	
SINDEXES									
	DOM	GRN	GRS	ABI	\$PROFIT		\$PROFIT PR		
	117	133	116	122	\$10,829		Top 8%		

There is a lot to talk about here. From the day he was born he was a standout. Not only was he appealing to the eye, and an absolute cracker of a bull calf, but his lineage is something special.

M9 traces back to my all-time favourite cow I remember growing up, Ythanbrae U30, who was born in 1975. She was sired by MASSIVE OF KAHARAU so we thought appropriately we should name this calf MASSIVE too.

The old U30 had 12 calves for 12 years, each at 365 days after the other. She was one of the highest ratio cows of her time, well before the days of Breedplan, computers and genomics!

U30 had a well stacked pedigree:

MASSIVE OF KAHARAU
TEMANIA ZANDY NZ
RAS TRAVELER
NEW TREND 315
BV NEW DESIGN 1407
TOP BOSS
ABSOLUTE

– she was the dam that produced Ythanbrae Angus L10, B45 and K129, who went on to breed the infamous Ythanbrae True Blue N33.

Massive M9 has an interesting twist in his pedigree, with Absolute and Packer in the mix – adding new genetics to an already proven lineage. It is worth noting – Massive M9s grand dam is still going strong in our herd. She herself, like her great-great-grand dam, has bred 11 calves at 365 day interval at 12 years of age.



Ythanbrae Tru Blue N33 with dam Ythanbrae K129

Breed Avg. EBV (2015 Born Calves)	DIR	DTRS	GL	BWT	200	400	600	MCW	MILK	SS	DC	CWT	RIB	RUMP	EMA	RBV	IMF	DOM	GRN	GRS	ABI
	0.0	0.1	-3.7	4.3	42	77	100	88	15	1.7	-3.8	56	0.0	-0.2	4.6	0.3	1.6	\$103	\$110	\$105	\$106

YEARLING BULLS

LOT 48 BELLASPUR MOHAVE M1

Birth Date: 13/02/2016 Ident: M01GSB Society Id: GSBM1 Sex: M ASA: HBR

TUWAHRETOA REGENT D145
Sire: PARINGA JUDD J5
STRATHEWEN BERKLEY WILPENA F30

TE MANIA AMBASSADOR A134
LAWSON'S HENRY VIII Y5
TE MANIA BERKLEY B1
STRATHEWEN IN FOCUS WILPENA B41

RITO REVENUE 5M2 OF 2536
Dam: BELLASPUR RR QUIX K3
CAMPBELL FARMS QUIX H255

GAR PREDESTINED
GAR PRECISION 2536
CAMPBELL FARMS YABBA Y035
CAMPBELL FARMS QUIX B420

2017 AUSTRALIAN ANGUS GROUP BREEDPLAN EBVs									
EBVs	CALVING EASE				GROWTH & MATERNAL				
	DIR	DTRS	GL	BWT	200	400	600	MWT	MILK
Acc	1.9	0.3	-7.8	4.2	53	95	132	113	19
	45	38	81	68	61	60	61	55	44
EBVs	FERTILITY				CARCASS				
	SS	DC	CWT	RIB	RUMP	EMA	RBY	IMF	
Acc	1.7	-6.3	77	1.5	0.4	8.1	-0.4	3.2	
	55	36	51	49	48	48	46	47	
\$INDEXES									
DOM		GRN		GRS		ABI		\$PROFIT	
123		171		139		150			

Impressive on paper and also in the flesh, Judd J5 X Rito Revenue from the bomb proof Quix family this pedigree is stacked with performance.
Owned by Bella Spur Angus

LOT 49 BELLASPUR MOSCOW M5

Birth Date: 18/03/2016 Ident: M05GSB Society Id: GSBM5 Sex: M ASA: APR

RENNYLEA D372
Sire: RENNYLEA AMBASSADOR F857
RENNYLEA W449

TE MANIA AMBASSADOR A134
LAWSON'S HENRY VIII Y5
B/R NEW DIMENSION 7127
RENNYLEA T329

SAV INITIATIVE 4406
Dam: BELLASPUR GRACE J2
BELLASPUR B602

SAV 8180 TRAVELER 004
SAV MISS BOBBIE 0405
BT RIGHT TIME 24J

2017 AUSTRALIAN ANGUS GROUP BREEDPLAN EBVs									
EBVs	CALVING EASE				GROWTH & MATERNAL				
	DIR	DTRS	GL	BWT	200	400	600	MWT	MILK
Acc	0.3	1.9	-6.3	3.3	38	76	95	87	15
	47	40	79	67	59	58	58	55	49
EBVs	FERTILITY				CARCASS				
	SS	DC	CWT	RIB	RUMP	EMA	RBY	IMF	
Acc	1.6	-6.6	65	1.7	1.4	3.3	-0.9	3.2	
	54	38	54	52	51	51	49	50	
\$INDEXES									
DOM		GRN		GRS		ABI		\$PROFIT	
108		133		109		118			

Calving ease and positive fats, M5's Initiative dam is one of our best.
Owned by Bella Spur Angus

LOT 51 BELLASPUR MOROCCO M24

Birth Date: 28/04/2016 Ident: M24GSB Society Id: GSBM24 Sex: M ASA: APR

GAR-EGL PROTÉGÉ
Sire: PA FORTITUDE 2500
G G CLARA 0171

RITO 112 OF 2536 RITO 616
L B 6807 ISABEL 339
SYDGEN C CAND 7
G G CLARA 7192

KMK ALLIANCE 6595
Dam: BALLASPUR K9
BELLASPUR F2

SITZ ALLIANCE 6595
GAR EXT 916
GUNBAR EBONY X107

2017 AUSTRALIAN ANGUS GROUP BREEDPLAN EBVs									
EBVs	CALVING EASE				GROWTH & MATERNAL				
	DIR	DTRS	GL	BWT	200	400	600	MWT	MILK
Acc	0.5	1.1	-2.3	2.7	45	80	102	84	15
	43	33	81	66	55	53	54	51	44
EBVs	FERTILITY				CARCASS				
	SS	DC	CWT	RIB	RUMP	EMA	RBY	IMF	
Acc	1.1	-2.5	68	-0.7	-1.2	4.7	0.8	1.1	
	44	28	47	43	40	41	40	39	
\$INDEXES									
DOM		GRN		GRS		ABI		\$PROFIT	
102		89		100		96			

PA Fortitude's sons were the headliner Bulls at Peterson Angus's most recent sale.
Look to this bull to add length, muscle and growth to your calf crop.
Owned by Bella Spur Angus



LOT 50 BELLASPUR MILWAUKEE M20

Birth Date: 21/04/2016 Ident: M20GSB Society Id: GSBM20 Sex: M ASA: APR

SAV BISMARCK 5682
Sire: SAV BRILLIANCE 8077
SAV BLACKCAP MAY 5270

GAR GRID MAKER
SAV ABIGALE 0451
SAV 8180 TRAVELER 004
SAV MAY 2420

KMK ALLIANCE 6595
Dam: BELLASPUR K4
BELLASPUR B602

SITZ ALLIANCE 6595
GAR EXT 916
BT RIGHT TIME 24J

2017 AUSTRALIAN ANGUS GROUP BREEDPLAN EBVs									
EBVs	CALVING EASE				GROWTH & MATERNAL				
	DIR	DTRS	GL	BWT	200	400	600	MWT	MILK
Acc	3.4	0.3	-4.6	2.3	42	75	90	71	18
	46	39	81	67	60	59	60	58	51
EBVs	FERTILITY				CARCASS				
	SS	DC	CWT	RIB	RUMP	EMA	RBY	IMF	
Acc	1.2	5.4	60	0.7	0.3	5.7	0.7	0.7	
	53	33	52	50	48	48	47	47	
\$INDEXES									
DOM		GRN		GRS		ABI		\$PROFIT	
104		85		101		97			

M20 has always been an eye catching calf. Multiple generations of calving ease and feed efficiency. Look to this lot as a genuine heifer bull.
Owned by Bella Spur Angus

	DIR	DTRS	GL	BWT	200	400	600	MCW	MILK	SS	DC	CWT	RIB	RUMP	EMA	RBY	IMF	DOM	GRN	GRS	ABI
Breed Avg. EBV (2015 Born Calves)	0.0	0.1	-3.7	4.3	42	77	100	88	15	1.7	-3.8	56	0.0	-0.2	4.6	0.3	1.6	\$103	\$110	\$105	\$106

LOTS 52, 53, & 54

These Angus bulls are the top of the drop in phenotypic terms, and have great docility. They are guaranteed calving ease bulls with a big potential to marble and yield.

LOT 52 PARINGA COMMERCIAL H130 M12

Birth Date: 19/02/2016 Ident: M0012 Society Id: HKFM12 Sex: M ASA: COM

AYRVALE BARTEL E7
Sire: **PARINGA BARTEL H130**
PARINGA RED PACKER F406 (AI)

TE MANIA BARTEL B219
EAGLEHAWK JEDDA B32
MESSMER PACKER S008 (RED)
PARINGA RED VICEROY D43

Dam: MULTIPLE SIRE ANGUS DAM

LOT 53 PARINGA COMMERCIAL H130 M16

Birth Date: 11/03/2016 Ident: M0016 Society Id: HKFM16 Sex: M ASA: COM

AYRVALE BARTEL E7
Sire: **PARINGA BARTEL H130**
PARINGA RED PACKER F406 (AI)

TE MANIA BARTEL B219
EAGLEHAWK JEDDA B32
MESSMER PACKER S008 (RED)
PARINGA RED VICEROY D43

Dam: MULTIPLE SIRE ANGUS DAM

LOT 54 PARINGA COMMERCIAL H130 M28

Birth Date: 18/02/2016 Ident: M0028 Society Id: HKFM28 Sex: M ASA: COM

AYRVALE BARTEL E7
Sire: **PARINGA BARTEL H130**
PARINGA RED PACKER F406 (AI)

TE MANIA BARTEL B219
EAGLEHAWK JEDDA B32
MESSMER PACKER S008 (RED)
PARINGA RED VICEROY D43

Dam: MULTIPLE SIRE ANGUS DAM





REBATES & PAYMENT INSTRUCTIONS

2%

CLIENTS WHO CHOOSE TO PAY BY CHEQUE OR EFT ON THE DAY OF THE SALE WILL RECEIVE A 2% REBATE ON THEIR PURCHASES

CREDIT CARD

CLIENTS MAY PAY BY CREDIT CARD ON THE DAY OF THE SALE

5%

5% REBATE TO ALL AGENTS THAT ATTEND THE SALE AND PURCHASE WITH/ON BEHALF OF THEIR CLIENTS, AND SETTLE WITHIN 5 WORKING DAYS, WITH PAYMENT RECEIVED BY VENDOR NO LATER THAN FRIDAY 10TH MARCH 2017.

PLEASE NOTE ONLY ONE (1) OF THE ABOVE REBATES CAN BE CLAIMED

AGENT INTRODUCTIONS DIRECT TO MARION@GTSM.NET.AU OR CALL MARION (MAZ) GLASSER 0418 122 799

SAVE TIME - PRE REGISTER

ONLINE BUYERS REGISTRATION FORM, GO TO WWW.GTSM.NET.AU

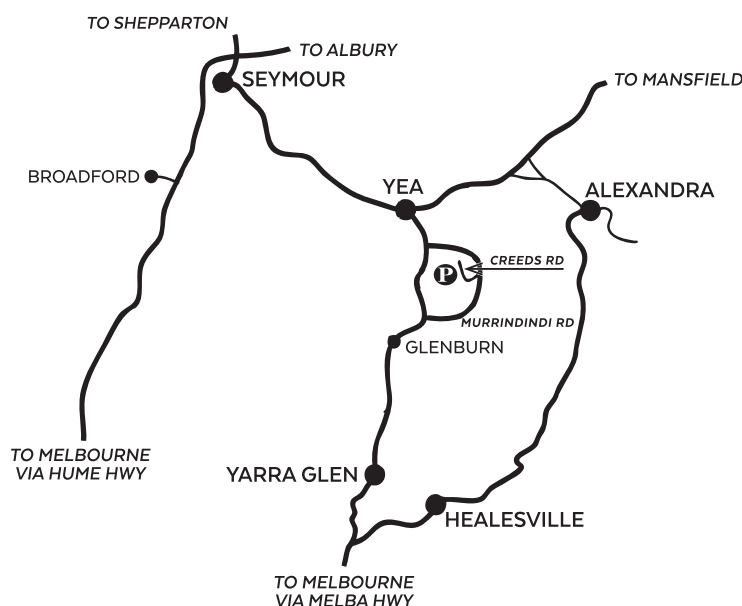
YOU CAN NOW REGISTER ONLINE BEFORE YOU GET TO THE SALE,

ONCE YOU ARRIVE PLEASE PICK UP YOUR BUYERS NUMBER FROM THE SALE OFFICE.

PLEASE NOTE: REGISTRATION ON SALE DAY IS STILL AVAILABLE AS NORMAL.



GTSM
Glasser Total Sales Management



SALE LOCATION: "MISS YOUNG'S" - 96 CREEDS RD, MURRINDINDI VICTORIA 3717.

DIRECTIONS (FROM YEA): FOLLOW MELBA HWY 8KMS SOUTH OF YEA, TURN LEFT AT MURRINDINDI RD. FOLLOW 8KMS AND TURN RIGHT AT CREEDS RD. FOLLOW FOR 1KM, SALE SITE ON LHS.

ACCOMMODATION

YEA MOTEL	8 Miller St Yea	03 5797 2660
PEPPERCORN HOTEL	21 Station St Yea	03 5797 2000
ROYAL MAIL HOTEL	88 High St Yea	03 5797 2515

ANGUS & STABILIZER® SIRE



INTRODUCING DAVELLE BAROSSA J5 STABILIZER® SIRE

BAROSSA, SON OF BC PROGRESS WAS SELECTED TO BE PART OF OUR STABILIZER® BREEDING PROGRAM, AND WE ARE EXCITED ABOUT INTRODUCING THIS FIRST DRAFT OF BAROSSA SONS IN THE SALE. HE IS A SUPER QUIET BULL, FEED EFFICIENT, MASSIVE CARCASE WEIGHT, AND VERY HIGH MEAT QUALITY.

EC PROGRESS, SIRE OF BAROSSA, IS THE HIGHEST \$PROFIT OPTION TO ADD SOUTH DEVON TO THE COMPOSITE GENEPOL. OUR CONTINUED COMMITMENT TO THOSE OF YOU THAT USE OUR STABILIZER® PROGRAM IS TO FIND AND TEST BULLS FROM THE MOST COMPATIBLE AND VALUABLE BREEDS. ALONG WITH THAT WE REQUIRE THAT EVERY COMPONENT BREED IS REPRESENTED BY SIREs THAT CAN COMPETE WITH, AND ADD TO THE VALUE OF EXISTING CATTLE IN OUR GENE POOL. PROGRESS NOT ONLY MEETS OUR CRITERIA, BUT POSTS ONE OF THE HIGHEST \$PROFIT VALUES, RANKING IN THE TOP 1% FOR FEED /GAIN AND 2% FOR INTAKE. THIS PUREBRED SOUTH DEVON SIRE EXCELS IN ANY BREEDING SCENARIO FROM PUREBRED SEED STOCK APPLICATION TO DEVELOPING A UNIQUE COMPOSITE GENE POOL.

JUDD J5 HAS GONE FROM STRENGTH TO STRENGTH AS MORE DATA IS SUBMITTED. HE CURRENTLY RANKS AS THE BEST BALANCED PROVEN REGENT SON ON THE MARKET. JUDD WAS OUR HIGHEST PRICE YEARLING BULL EVER SOLD, AT \$36,000.

A UNIQUE COMBINATION OF HIGH GROWTH, WITH ONE OF THE LOWEST MATURE COW SIZES, JUDD RANKS IN THE TOP 20 BULLS OF THE WHOLE ANGUS DATA BASE. MASSIVE CARCASE WEIGHTS AND 150K RESULTS SUGGEST HIGH FEED EFFICIENCY. JUDD IS THE HIGHEST FAT BULL IN A GROUP OF PROVEN TOP 20 INDEXING BULLS. HE IS SPECTACULAR ON DAUGHTER FERTILITY WITH CARCASE TRAITS THAT ARE HARD TO FIND. CUSTOMER SATISFACTION IS VERY HIGH AND PEOPLE LOVE HIS SOFT, EASY DOING, STYLISH PACKAGES. AND WITH HIS LATEST DATA STATS JUST IN, IT'S EASY TO SEE WHY.

JUDD IS NOW RANKED IN THE TOP 1% ON EIGHT TRAITS.



PARINGA JUDD J5 (AI) BLACK ANGUS SIRE

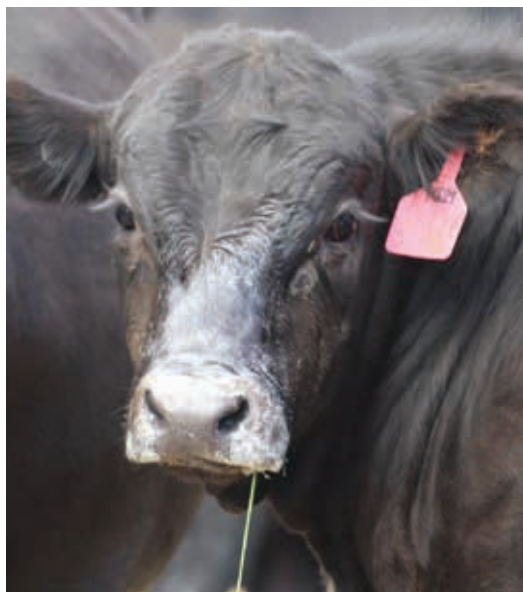
J87 WAS SELECTED AS STUD SIRE FOR HIS PREDICTED SHORT AND EARLY GESTATION, AND ALMOST COMPLETE OUTCROSS ANGUS GENETICS, THAT CARRIES THE GENETIC LINEAGE FOR VERY HIGH FEED EFFICIENCY WITH STRONG MATERNAL TRAITS. PARINGA ABSOLUTELY J87 HIMSELF IS VERY HIGH ON THESE TRAITS, AND HIS PROGENY ALSO, PARTICULARLY EMA AND MARBLING SCAN RESULTS.

J87 HAS WORKED WELL OVER THE MODERN ANGUS LINES, AND ALSO COMPLETED OUR BLACK STABILIZER® FEMALES. ABSOLUTELY WILL LET YOU SLEEP EASY DURING CALVING, AND PUT EXTRA \$\$ INTO YOUR POCKET.

HIS FEATURE SON IN THIS SALE IS WORTHY OF CLOSE INSPECTION, PARINGA MASSIVE M9.



PARINGA ABSOLUTELY J87 BLACK ANGUS SIRE



WWW.PARINGALIVESTOCK.COM.AU

FOR MORE INFORMATION

PHONE TOM LAWSON 0434 146 795

CONTACT PARINGA OFFICE 03 5797 3003 • INFO@PARINGALIVESTOCK.COM.AU

SPRING BULL SALE DATES

YEA 28TH SEPTEMBER 2017 • BALLARAT 18TH OCTOBER 2017

